

DISCOVERING INDUSTRIAL TOURISM

5th > 19th APRIL 2025



Grande Desempenho
Rede Portuguesa
**turismo
industrial**

Discovering Industrial Tourism

5th to 19th April 2025

The Portuguese Industrial Tourism Network invites you to participate in the fourth edition of the nationwide initiative “Discovering Industrial Tourism”, which will take place from the 5th to 19th April 2025.

A new perspective from which to discover Portugal, the initiative revolves around authentic, original experiences in active industrial sites and areas of industrial heritage that showcase the unique identity of each region.

Exploring the craftsmanship of Portugal’s signature products serves as the inspiration for various activities, providing each visitor with memorable experiences across the country, from north to south.

Visiting operational factories and museum exhibits, understanding manufacturing processes, observing machinery in action, and experiencing final products are examples of unique activities made available through the initiative to participants of all ages.

Learning about history narrated through the lens of industry is a unique way to value the identity of Portugal’s many regions and communities.

Check out the Programme to take part!





INDEX

ACTIVITIES IN THE AZORES
PAGE 5

ACTIVITIES IN THE ALENTEJO AND RIBATEJO
PAGE 9

ACTIVITIES IN THE ALGARVE
PAGE 20

ACTIVITIES IN THE CENTRE OF PORTUGAL
PAGE 39

ACTIVITIES IN OPORTO AND THE NORTH
PAGE 80

ACTIVITIES IN THE LISBON REGION
PAGE 145

AZORES

ALENTEJO AND RIBATEJO

ALGARVE

CENTRE OF PORTUGAL

OPORTO AND NORTH

LISBON REGION

AZORES

April 5 to 19, Horta, Faial Island

SCRIMSHAW ACTIVITY

Using a bar of soap, a toothpick, and shoe polish, participants can try their hand at recreating the art of Scrimshaw, understanding that the technique involves carving negative spaces.

🕒 10:00 AM to 6:00 PM

€ € 1.50 guided tour + €1.50 activity + base fee:

€ 7.00 | Adult

€ 3.50 | Junior (11–17 years old)

€ 3.50 | Senior (65+ years old)

€ 2.00 | Resident of the Autonomous Region of the Azores (RAA),
excluding residents of Faial

€ 17.00 | Family (2 adults and 2 juniors)

Discounts: Students, Interjovem cardholders, members, groups of 8 or
more, and residents of the RAA.

Free: Residents of Faial Island.

Free guided tour: Available upon request via email or phone.

Booking required

♿ Activity partially accessible to people with specific needs
No parking reserved for people with reduced mobility

📍 Fábrica da Baleia de Porto Pim
Monte da Guia
9900-011 Horta

☎ (+351) 292 292 140
omaacores@gmail.com
www.oma.pt/index.php



AZORES

April 5 to 19, Horta, Faial Island

FACTORY PAPER CHASE

An activity usually carried out with school groups or groups of young people who go on a paper chase throughout the Museum.

🕒 10:00 AM to 6:00 PM

€ € 1.50 guided tour + €1.50 activity + base fee:

€ 7.00 | Adult

€ 3.50 | Junior (11–17 years old)

€ 3.50 | Senior (65+ years old)

€ 2.00 | Resident of the Autonomous Region of the Azores (RAA),
excluding residents of Faial

€ 17.00 | Family (2 adults and 2 juniors)

Discounts: Students, Interjovem cardholders, members, groups of 8 or
more, and residents of the RAA

Free: Residents of Faial Island

Free guided tour: Available upon request via email or phone

Booking required

♿ Activity partially accessible to people with specific needs
No parking reserved for people with reduced mobility

📍 Fábrica da Baleia de Porto Pim
Monte da Guia
9900-011 Horta

☎ (+351) 292 292 140
omaacores@gmail.com
www.oma.pt/index.php



AZORES

April 5 to 12, São Roque do Pico, Pico Island

PERSPECTIVES OF THE FACTORY

A live drawing session aimed at capturing the essence of the old whale factory, “Armações Baleeiras Reunidas, Lda.”—once the largest and most significant sperm whale processing complex in the Azores, now home to the Whaling Industry Museum.

🕒 10:30 AM

€ Free

♿ Activity partially accessible to people with specific needs
No parking reserved for people with reduced mobility

📍 Museu do Pico / Museu da Indústria Baleeira
Rua do Poço
9940-361 São Roque do Pico

☎ (+351) 292 679 340
www.museu-pico.azores.gov.pt



AZORES

ALENTEJO AND RIBATEJO

ALGARVE

CENTRE OF PORTUGAL

OPORTO AND NORTH

LISBON REGION

ALENTEJO AND RIBATEJO

April 11, Aljustrel

NIGHT VISIT TO THE ALJUSTREL MINING PARK

The tour begins at the Aljustrel Mining Park Reception and Interpretation Centre, located next to the Poço de Viana mine shaft tower. Visitors first explore the Interpretation Centre, followed by the Compressed Air Power Plant. The journey continues along the Chapéu de Ferro Walkway, which highlights geological features and Roman-period archaeology, then descending to the Mining Gallery on Level 30, past the Poço do Vîpasca mine shaft tower and along a 500-metre underground route before returning to the Reception and Interpretation Centre.

🕒 8:00 PM

€ €10.00
Discounts available at <https://www.mun-aljustrel.pt/39013/precario>
Booking required

♿ Activity partially accessible to people with specific needs
Parking reserved for people with reduced mobility

📍 Centro de Receção e Interpretação do Parque Mineiro de Aljustrel
Vale de Oca
7600-020 Aljustrel

☎ (+351) 284 009 131
parquemineiro@mun-aljustrel.pt
www.parquemineiroaljustrel.pt



ALENTEJO AND RIBATEJO

April 19, Aljustrel

DANCING ON THE LEVEL 30 GALLERY

A visit to the Mining Gallery on Level 30 featuring dances inspired by mining stories and legends and a performance by the Aljustrel Dance Group.

🕒 3:00 PM

€ € 10.00

Discounts available at <https://www.mun-aljustrel.pt/39013/precario>
Booking required

♿ Activity accessible to people with specific needs
Parking reserved for people with reduced mobility

📍 Centro de Receção e Interpretação do Parque Mineiro de Aljustrel
Vale de Oca
7600-020 Aljustrel

☎ (+351) 284 009 131
parquemineiro@mun-aljustrel.pt
www.parquemineiroaljustrel.pt



ALENTEJO AND RIBATEJO

April 5 to 16, Ferreira do Alentejo

VISIT TO THE LAND OF SEEDLESS GRAPES

Visit Vale da Rosa, the land of seedless grapes, where nature reveals its secrets. The sweetness of the grapes and the distinct charm of the surroundings come together in this unique location, showcasing the very best of what the land has to offer.

🕒 10:00 AM to 1:00 PM | 2:30PM to 4:00PM

€ € 5.00
Booking required

♿ Activity accessible to people with specific needs
Parking reserved for people with reduced mobility

📍 Herdade Vale da Rosa
7901-909 Ferreira do Alentejo

☎ (+351) 284 739 933
liliana.faria@valedarosa.com
www.valedarosa.com



ALENTEJO AND RIBATEJO

April 7 to 11, Ferreira do Alentejo

DISCOVERING OLIVEIRA DA SERRA OLIVE OIL

A visit to Lagar do Marmelo provides insight into the olive oil production process and includes a tasting of Oliveira da Serra Extra Virgin olive oils.

🕒 10:00 AM to 12:00 PM | 2:00 PM to 4:00 PM

€ Free
Booking required

♿ Activity partially accessible to people with specific needs
Parking reserved for people with reduced mobility

📍 Herdade do Marmelo
7900-909 Ferreira do Alentejo

📞 visitalagardomarmelo@sovena.pt
www.oliveiradaserra.pt/pt/oliveira-da-serra/



ALENTEJO AND RIBATEJO

April 18, Grândola

LOUSAL MINING MUSEUM HERITAGE, TECHNOLOGICAL INNOVATION AND SUSTAINABILITY

The activity offers a unique insight into the history of the old Power Plant, which supplied energy to the Lousal industrial complex and its community. Now a museum, the space houses a valuable collection of objects and equipment that serve as a testament to the pyrite extraction industry that once thrived here. The production of energy continues to this day, but it is now done by means of solar panels.

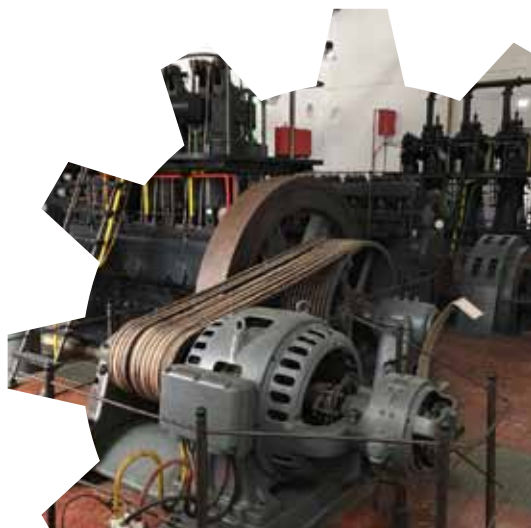
🕒 11:00 AM to 1:00 PM

€ € 6.00 per person
Booking required

♿ Activity accessible to people with specific needs
Parking reserved for people with reduced mobility

📍 Museu Mineiro do Lousal
Av. Frédéric Velge, s/n
7570-019 Lousal

☎ (+351) 269 750 520
acolhimento@lousal.cienciaviva.pt
www.lousal.cienciaviva.pt



ALENTEJO AND RIBATEJO

April 12, Ponte de Sor

GUIDED TOUR OF PONTE DE SOR'S INDUSTRIAL HERITAGE

The Industrial Revolution, a phenomenon with a global impact, left a lasting mark on many regions, including Ponte de Sor. Several expressions of Industrial Heritage are seamlessly integrated into the urban landscape throughout the city. This route explores these manifestations and lays the groundwork for future projects aimed at preserving this legacy.

🕒 10:00 AM to 1:00 PM

€ Free
Booking required

♿ Activity partially accessible to people with specific needs
Parking reserved for people with reduced mobility

📍 Starting point: Centro de Artes e Cultura de Ponte de Sor
Avenida da Liberdade, 64
7400-218 Ponte de Sor

☎ (+351) 242 291 581
museu.municipal@cm-pontedesor.pt
cm-pontedesor.pt



ALENTEJO AND RIBATEJO

April 7 to 11 and 14 to 17, Reguengos de Monsaraz

VISIT TO THE ALENTEJO WOOL FACTORY

The Alentejo Wool Factory preserves ancestral textile production techniques, providing visitors with a unique opportunity to observe and get to grips with the fundamental principles of weaving.

🕒 9:00 AM to 1:00 PM | 3:00 PM to 5:00 PM

€ € 5.00 per person
Booking required

♿ Activity not accessible to people with specific needs
No parking reserved for people with reduced mobility

📍 Fabricaal
Rua dos Mendes, 79
7200-302 Reguengos de Monsaraz

☎ (+351) 266 502 179
fabrica@fabricaal.com
www.fabricaal.com



ALENTEJO AND RIBATEJO

April 5 to 12, Santiago do Cacém

GUIDED TOUR

Guided tour of the José Mateus Vilhena Milling Factory and the viewing of a documentary.

🕒 2:00 PM to 6:00 PM

€ € 2.00
Booking required

♿ Activity partially accessible to people with specific needs
No parking reserved for people with reduced mobility

📍 Museu da Farinha
Rua 1º de Maio, 36
7540-415 S. Domingos

☎ (+351) 961 388 217
museudafarinha@gmail.com



ALENTEJO AND RIBATEJO

April 7 or 8, Viana do Alentejo

COWBELL-MAKER FOR A DAY WORKSHOP

In this workshop, guided by a Master Cowbell Maker, participants will explore the various stages of cowbell production. From cutting and shaping the iron sheet to marking, wrapping the cowbell in a clay cocoon, cooking, rolling, and seasoning it while still encased in clay, the process culminates in tuning and final wrapping. In a unique and personalised experience, visitors will uncover some of the secrets behind this tradition, which blends the art of ironwork with musical tuning in a traditional, ancient craft recognised by UNESCO as Intangible Cultural Heritage in Need of Urgent Safeguarding.

🕒 3:00 PM to 5:30 PM

€ € 250.00
Prior booking required

♿ Activity accessible to people with specific needs
Parking reserved for people with reduced mobility

📍 Chocalhos Pardalinho
Rua dos Saberes e Sabores, 12
Zona Industrial das Alcáçovas
7090-020 Alcáçovas

📞 guilherme@chocalhospardalinho.pt
<https://www.chocalhospardalinho.com/>



ALENTEJO AND RIBATEJO

April 5 to 19, Vila Viçosa

MARBLE TOUR IN VILA VIÇOSA

Visit the three main stages of the marble cycle: extraction, transformation and its use in architecture and sculpture. The visit includes an interpretive centre with a geological, geographical and historical background; a visit to a quarry centre, observing the extraction processes; a visit to an industrial processing unit (sawmill) where the final product is observed. All visits take place in accordance with established rules (see website).

🕒 9:30 AM | 2:30 PM

€ € 25.00 per person | € 20.00 for seniors (65+) | € 20.00 for minors (under 18)
€ 7.50 for children up to 6 years old – Minimum 2 people
€ 30.00 – 1 person

Visit for groups - special offer (consult us)

“Discover Industrial Tourism 2025 programme: 20% discount on all visitors

Booking required

♿ Activity not accessible to people with specific needs
No parking reserved for people with reduced mobility

📍 Rota do Mármore AE
Avenida Duques de Bragança, 4
7160-209 Vila Viçosa

☎ (+351) 965 087 618
geral@rotadomarmoreae.com
<https://rotadomarmoreae.com/pt-pt/>



AZORES

ALENTEJO AND RIBATEJO

ALGARVE

CENTRE OF PORTUGAL

OPORTO AND NORTH

LISBON REGION

ALGARVE

April 7 to 11 and 14 to 18, Faro

DISCOVERING CORK

An activity that blends learning and creativity, featuring a storytelling session and a hands-on workshop using recycled cork stoppers. Participants will use simple techniques to create practical items such as mobile phone holders or trivets.

🕒 10:00 AM to 12:00 PM

€ € 25.00
€ 15.00 | Children aged 10 to 16
Booking required

♿ Activity partially accessible to people with specific needs
Parking reserved for people with reduced mobility

📍 NF CORK, LDA
Torre de Natal, Caixa 60 A
8005-533 Faro

☎ (+351) 289 805 901
geral@nf-cork.pt
www.nf-cork.pt



ALGARVE

April 13, Loulé

EGG HUNT AND WINE TASTING

An activity that invites participants to embark on an exciting egg hunt in a picturesque vineyard, with fun prizes for all—wine for the adults (perhaps?) and sweets for the kids (naturally!) The festivities round off with relaxed wine and tapas tasting for the adults, while children enjoy a selection of sweet and savoury snacks, ensuring an enjoyable experience for all.

For adults, the activity includes an egg hunt with prizes, tasting of 3 wines, a regional tapa, cheese, chorizo, and ham (or a cheese board). For kids, it includes the egg hunt, a savoury snack and a sweet treat.

🕒 10:00 AM

€ € 23.50 | Adult
€ 13.50 | Child
Booking required

♿ Activity not accessible to people with specific needs
Parking reserved for people with reduced mobility

📍 Quinta da Tôr
EM 525
8100-397 Loulé

☎ (+351) 968 427 271
https://quintadator.com/?page_id=7585



ALGARVE

April 14, Loulé

SALPICK

PHOTOGRAPHY EXCURSION DOWN THE MINE

The scenic and beautiful stunning interior of the Loulé Rock Salt Mine is an inspiring location for the keenest of lenses. On a self-guided route through the mine, participants will encounter captivating, diverse environments, giving them the chance to frame the scene, adjust their camera settings, and capture each moment. The hardest challenge will be selecting the best photo. This challenging task is taken on by a panel of judges, who, following a social lunch of wine and tapas at the esteemed Quinta da Tôr, will deliver their verdict and award the well-deserved prize to the winner.

🕒 9:30 AM to 3:30 PM
9:30 AM to 12:30 PM | Photography Excursion
1:00 PM to 2:30 PM | Social Lunch at Quinta da Tôr
2:30 PM to 3:30 PM | Judging of Photographs and Awards Ceremony

€ € 30.00 | Participant
€ 15.00 | Assistant or Companion
Booking required

♿ Activity not accessible to people with specific needs
Parking reserved for people with reduced mobility

📍 Photography Excursion - TechSalt
R. Combatentes da Grande Guerra, 80
8100-616 Loulé

Social Lunch of wine and tapas
and Awards Ceremony - Quinta da Tôr
EM 525
8100-397 Loulé

☎ (+351) 925 969 369
turismo@techsalt.pt
www.techsalt.pt



ALGARVE

April 16, Loulé

SALT HUNTERS IN SEARCH OF HALITE

In Roman times, salt was considered one of the most valuable minerals, even used as a form of payment, which is where the word “salary” originates. According to legend, a deposit of halite, a rare and pure form of salt, was hidden deep within the mine, out of reach from the outside world. A good sense of direction, a keen eye, and problem-solving skills are essential for this treasure.

🕒 2:30 PM to 5:30 PM

€ € 30.00 | 1 Adult and 1 Child
€ 7.50 | Additional person, up to a maximum of 5

♿ Activity not accessible to people with specific needs
Parking reserved for people with reduced mobility

📍 TechSalt
R. Combatentes da Grande Guerra, 80
8100-616 Loulé

☎ (+351) 925 969 369
turismo@techsalt.pt
www.techsalt.pt



ALGARVE

April 17, Loulé

SALARIS - FICTION INSPIRED BY SALT

Inauguration of the exhibition in the fascinating interior of the Loulé Rock Salt Mine. The exhibition pieces invite deep reflection on the complex symbolic relationship between man and salt. An immersive and engaging experience that awakens the senses in a unique combination of art, technology, and geology.

🕒 2:00 PM to 6:00 PM

€ Free with the purchase of a ticket for the mine tour
Booking required

♿ Activity not accessible to people with specific needs
Parking reserved for people with reduced mobility

📍 TechSalt
R. Combatentes da Grande Guerra, 80
8100-616 Loulé

☎ (+351) 925 969 369
turismo@techsalt.pt
www.techsalt.pt



ALGARVE

April 7 to 11 and 14 to 18, Olhão

PICNIC AT THE QUINTA

Horta do Félix invites you to a one-of-a-kind experience in the enchanting setting where Monterosa artisanal olive oil is produced. Enjoy special moments in the olive grove—whether with family, friends, or as a couple—in an environment thoughtfully designed to provide comfort and tranquillity.

Each picnic basket, for two people, includes a bottle of Rosé or White wine, one litre of orange juice, one litre of water, a charcuterie board, a mixed-milk cheese, table olives, fish pâté or spread, pumpkin or fruit jam, thin toast, salted or sweet crisps, and two 20 ml bottles of Monterosa olive oil.

🕒 10:00 AM | 12:00 PM | 2:00 PM | 4:00 PM

€ € 31.00 - for two
€ 40.00 | Deposit - refunded upon return of the basket and respective materials
Booking required

♿ Activity partially accessible to people with specific needs
Parking reserved for people with reduced mobility

📍 Viveiros Monterosa
Horta do Félix - EM516-2 3
8700-068 Moncarapacho

☎ (+351) 913 036 150
tours@monterosa.pt
<https://monterosa-oliveoil.com>



ALGARVE

April 14 to 18, Olhão

GUIDED TOUR OF SALINAS DO GRELHA

A detailed presentation of the entire extraction and production process of traditional sea salt and fleur de sel, conducted in harmony with nature and set against the stunning backdrop of the Ria Formosa Natural Park.

🕒 10:00 AM | 3:00 PM

€ € 15.00 per person | Minimum 2 people
Discounts apply based on the number of participants: 3 people: € 12.00 each
4 to 10 people: €10.00 each | 11 to 20 people: € 9.00 each
Booking required

♿ Activity partially accessible to people with specific needs
Parking reserved for people with reduced mobility

📍 Salinas do Grelha
Cova da Onça - Belamandil
8700-172 Olhão

☎ (+351) 967 753 496
salinasdogrelha@sapo.pt
www.salinasdogrelha.pt



ALGARVE

April 5, Portimão

THE SARDINE - FROM THE SEA TO THE CAN

A guided tour starting in the Portimão riverside area, next to the Portugal I trawler, which is moored at the old unloading quay and purse seine fish market. The route covers purse seine fishing, as well as the arrival, unloading, and sale of fish at the market. Continuing along the riverside area to the former Feu Hermanos Conserves Factory, now the Portimão Museum, the focus shifts to the maritime-industrial setting, highlighting the arrival of fish at the factory and its transformation into canned goods.

🕒 3:00 PM

€ Free
Booking required

♿ Activity partially accessible to people with specific needs
Parking reserved for people with reduced mobility

📍 Museu de Portimão
Rua D. Carlos
Zona Ribeirinha, junto à antiga lota de Portimão
8500-607 Portimão

☎ (+351) 282 405 230
museu@cm-portimao.pt
www.museudeportimao.pt



ALGARVE

April 12, Portimão

“WORK’S ROUND THE CORNER AND HOME’S NEXT DOOR!” VISIT

A visit to some of Portimão’s neighbourhoods around the former Feu Hermanos Conserves Factory, now the Portimão Museum, historically linked to maritime workers and working class.

🕒 3:00 PM

€ Free
Booking required

♿ Activity partially accessible to people with specific needs
Parking reserved for people with reduced mobility

📍 Museu de Portimão
Rua D. Carlos
Zona Ribeirinha, junto à antiga lota de Portimão
8500-607 Portimão

☎ (+351) 282 405 230
museu@cm-portimao.pt
www.museudeportimao.pt



ALGARVE

April 5 to 17, São Brás de Alportel

GUIDED TOURS OF THE ECO CORK FACTORY

A guided tour of a traditional cork factory, providing an in-depth look at every stage of the process, from the selection and preparation of cork to packaging. An enriching experience that combines tradition and knowledge about this unique material.

🕒 11:30 AM | 2:00 PM

€ € 16.50
Booking required

♿ Activity accessible to people with specific needs
Parking reserved for people with reduced mobility

📍 Eco Fábrica da Cortiça
Sítio da Mesquita Baixa
8150-048 São Brás de Alportel

☎ (+351) 965 561 166
turismo@algarverotas.com
www.eco-corkfactory.com



ALGARVE

April 5 to 17, São Brás de Alportel

CORK BRACELET AND KEYRING WORKSHOP

An activity where visitors get the chance to craft a bracelet or keyring, working with cork in its various forms: cord, fabric, shavings, and even cork stoppers.

🕒 11:30 AM | 2:00 PM

€ € 9.50
Booking required

♿ Activity accessible to people with specific needs
Parking reserved for people with reduced mobility

📍 Eco Fábrica da Cortiça
Sítio da Mesquita Baixa
8150-048 São Brás de Alportel

☎ (+351) 965 561 166
turismo@algarverotas.com
www.eco-corkfactory.com



ALGARVE

April 5 to 19, São Brás de Alportel

GUIDED TOUR OF THE SABOR DO SUL OLIVE OIL MILL - PECOLIVA

A guided tour of the mill, including both the new and old facilities, to explore the production process of Sabor do Sul olive oil. The experience culminates with an olive oil tasting, complemented by tastings of medronho and fig brandies, as well as homemade liqueurs also produced at the mill.

🕒 9:00 AM to 11:00 AM | 2:00 PM to 4:00 PM – Weekdays

€ € 1.00
Booking required

♿ Activity not accessible to people with specific needs
Parking reserved for people with reduced mobility

📍 Pecoliva
Sítio da Chibeira
8150-028 São Brás de Alportel

☎ (+351) 289 791 611
(+351) 914 959 618
<https://sabordosul.pt>



ALGARVE

April 5 to 19, Silves

CLASSIC WINE TASTING

A guided tour of the vineyards, cellar, and barrel room, concluding with a guided tasting of three wines from the Classic Cabrita Wines range, paired with exceptional cheeses and charcuterie from local producers.

🕒 11:30 AM – Weekdays

€ € 25.00
Booking required

♿ Activity partially accessible to people with specific needs
Parking reserved for people with reduced mobility

📍 Cabrita Wines
Quinta da Vinha - Sítio da Vala
8300-032 Silves

☎ (+351) 911 113 176
reservas@cabritawines.com
www.cabritawines.com



ALGARVE

April 5 to 19, Silves

PRESTIGE WINE TASTING

A guided tour of the vineyards, cellar, and barrel room, followed by a guided tasting of four wines from the Premium Cabrita Wines range, paired with a selection of high-quality cheeses and charcuterie from local producers.

🕒 4:00 PM – Weekdays

€ € 45.00
Booking required

♿ Activity partially accessible to people with specific needs
Parking reserved for people with reduced mobility

📍 Cabrita Wines
Quinta da Vinha - Sítio da Vala
8300-032 Silves

☎ (+351) 911 113 176
reservas@cabritawines.com
www.cabritawines.com



ALGARVE

April 7 to 11, Silves

PREMIUM VISIT & TASTING

The experience begins with a guided tour of the vineyards, revealing the unique terroir that characterises Paxá wines. Along the way, participants are immersed in the history of the company, a family-run project devoted to producing wines that capture the true essence of the Algarve. The visit then continues at the winery, providing a detailed overview of the winemaking process. To round off their visit, visitors can enjoy tasting three wines from the premium range, paired with an appetiser board made up of regional products.

🕒 2:30 PM to 4:00 PM

€ € 25.00 per person
5% discount on purchases over € 100.00
10% discount on purchases over € 200.00
Booking required

♿ Activity accessible to people with specific needs
No parking reserved for people with reduced mobility

📍 Paxá Wines
Quinta Do Outeiro Sítio Do
8300-054 Silves

☎ (+351) 967 304 650
wineshop@paxawines.pt
www.paxawines.pt



ALGARVE

April 7 to 11 and 14 to 17, Tavira

GUIDED TOUR OF THE OLIVE FACTORY WITH TASTING

A visit to the olive factory, where participants can closely observe the production process, and all the stages involved in producing table olives. To round off their visit, visitors get the chance to sample local products, including a variety of olive oils and types of olives. The experience blends learning about the region's culinary culture with the opportunity to savour authentic flavours, making it both enriching and delicious.

🕒 4:00 PM to 5:30 PM

€ € 19.90 per adult
Booking required

♿ Activity partially accessible to people with specific needs
Parking reserved for people with reduced mobility

📍 Helder Madeira Unipessoal
Estrada do Arraial Ferreira Neto S/N
8800-228 Tavira

☎ (+351) 281 326 175
(+351) 964 482 078
heldermadeira.com/tours



ALGARVE

April 5, Vila do Bispo

FROM THE WHEAT STOREHOUSE TO THE STOREHOUSE OF HISTORY

Visit to the Vila do Bispo Museum, the Algarve's newest museum, which was inaugurated in 2024. The exhibition takes visitors on a journey through the Algarve's geological and paleontological past, highlighting the region's natural, cultural, material, and immaterial heritage. Focusing on human presence and activities, as well as the history of agriculture, the journey spans 7,000 years up to the present day. The building itself is a remarkable example of Industrial Archaeology, originally built in the 1950s.

🕒 3:00 PM to 5:00 PM

€ Free
Booking required

♿ Activity partially accessible to people with specific needs
Parking reserved for people with reduced mobility

📍 Museu de Vila do Bispo - Celeiro da História
Sítio das Eiras
8650-405 Vila do Bispo

☎ (+351) 927 193 677
museu.celeirodahistoria@cm-viladobispo.pt
F @museuviladobispo



ALGARVE

April 5 to 19, Vila Real de Santo António

VISIT TO THE CANNING INDUSTRY

The purpose of the visit is to give a detailed presentation of the canning process, from the catching of the fish to the crimping of the cans. It also highlights important aspects of the canning industry, such as the art of lithography, daily life in the factories and the social context in which it developed, providing a complete and enriching insight into this emblematic activity.

🕒 9:30 AM | 4:45 PM - weekdays

€ Free of charge | Minimum 3 people, maximum 15
Booking required

♿ Activity accessible to people with specific needs
No parking reserved for people with reduced mobility

📍 Arquivo Histórico Municipal António Rosa Mendes - Torreão-Sul
Avenida da República
8900-204 Vila Real de Santo António

☎ (+351) 281 510 260
arquivo.municipal@cm-vrsa.pt
www.cm-vrsa.pt



AZORES

ALENTEJO AND RIBATEJO

ALGARVE

CENTRE OF PORTUGAL

OPORTO AND NORTH

LISBON REGION

CENTRE OF PORTUGAL

April 11, Abrantes

NIGHT AT THE MDF

The night-time guided tour provides the opportunity to explore the collection of the Metalúrgica Duarte Ferreira Museum from a fresh perspective, immersed in the tranquillity and mystery of the night.

🕒 9:30 PM to 11:00 PM

€ Free
Booking required

♿ Activity accessible to people with specific needs
Parking reserved for people with reduced mobility

📍 Museu Metalúrgica Duarte Ferreira
Rua Comendador Eduardo Duarte Ferreira, 116
2205-697 Tramagal

☎ (+351) 968 504 601
museusdeabrantes@cm-abrantes.pt
www.museusdeabrantes.pt
www.cm-abrantes.pt



CENTRE OF PORTUGAL

April 5 to 11 and 14 to 18, Águeda

VISIT TO THE BIRTHPLACE OF BICYCLES

A chance to learn about the manufacturing and assembly processes of bike-sharing bicycles in Portugal. The visit will be led by a specialised team, who will present each stage in collaboration with the relevant on-site professionals.

The tour culminates in the showroom, where visitors can take in the range of products developed by Lightmobie.

🕒 10:00 AM to 12:00 PM | 2:30 PM to 4:30 PM

€ Free
Booking required

♿ Activity accessible to people with specific needs
Parking reserved for people with reduced mobility

📍 Lightmobie
Rua dos Três Marcos, 125
3750-064 Aguada de Cima

☎ (+351) 960 443 379
projetos@lightmobie.pt
<https://lightmobie.pt/>



CENTRE OF PORTUGAL

April 13, Alcanena

HERITAGE WALK: ALCANENA TECHNICAL AND INDUSTRIAL HERITAGE

Interpretive walk through the town of Alcanena to learn about its technical and industrial heritage, including a visit to the Municipal Museum. The history of Alcanena encompasses the history of the Tanning Industry. Walking through the streets of the town, visitors will spot locations where, in times long gone, the sound of leather soles being worked could be heard, and hides hung out to dry revealed the location of yet another factory. On a tour that ends with a visit to the Municipal Museum, which features an area specifically showcasing this industry, visitors will dive a little deeper into Alcanena and its vast industrial heritage.

🕒 9:00 AM

€ Free
Booking required

♿ Activity partially accessible to people with specific needs
No parking reserved for people with reduced mobility

📍 Museu Municipal de Alcanena
Rua A
2380-011 Alcanena

☎ (+351) 249 101 442
museu.municipal@cm-alcanena.pt
www.cm-alcanena.pt



CENTRE OF PORTUGAL

April 5 to 19, Alcobaça

SWEET ATELIER WORKSHOP

The Sweet Atelier workshop consists of learning how to make a traditional convent sweet treat aided by Catarina Saraiva. The history of the delicacy will be told as Catarina guides participants through the process! The treat made could either be the famous “Cornucópia” or “Amor Meu” (literally, My Love).

🕒 10:00 AM to 12:00 PM

€ € 12.00 to € 18.00

♿ Parking reserved for people with reduced mobility

📍 Atelier do Doce
Rua da Escola 2, Casal do Amaro
2460-196 Alfeizerão - Alcobaça

☎ (+351) 262 509 337
geral@atelierdodoce.pt
www.atelierdodoce.pt



CENTRE OF PORTUGAL

April 5 to 19, Alcobaça

GUIDED TOUR OF THE ROOM WITH HISTORY

Visitors are invited to take a guided tour of the Room with History, which showcases the growth and development of the Sweet Atelier over the years. During the experience, they will get the chance to enjoy a panoramic view of the factory, watch the production process, and check out the first machines ever used, which marked the beginning of this agricultural and culinary journey.

🕒 10:00 AM to 12:00 PM | 2:00 PM to 4:00 PM
Except on April 18th

€ € 1.50
Booking required

♿ Activity partially accessible to people with specific needs
Parking reserved for people with reduced mobility

📍 Atelier do Doce
Rua da Escola 2, Casal do Amaro
2460-196 Alfeizerão - Alcobaça

☎ (+351) 262 509 337
geral@atelierdodoce.pt
www.atelierdodoce.pt



CENTRE OF PORTUGAL

April 5 to 12, Anadia

A VISIT TO THE WORLD OF 2 WHEELS

A chance to learn about and get a detailed look into the process of assembling a bicycle, exploring each stage, at the INCYCLES BIKE GROUP facilities.

🕒 3:00 PM to 4:30 PM

€ Free
Booking required

♿ Activity partially accessible to people with specific needs
Parking reserved for people with reduced mobility

📍 Incycles
Parque Empresarial LEVIPOR
Estrada Nacional, 1
3780-294 Malaposta

📞 filipe@incycles.eu
www.incycles.eu



CENTRE OF PORTUGAL

April 5, Caldas da Rainha

SECLA, SOCIEDADE DE EXPORTAÇÃO E CERÂMICA: CONTEMPORARY LEGACIES

A visit to the SECLA collections at the Ceramics Museum provides a tour of the iconic local ceramic industry in Caldas da Rainha. During the experience, participants find themselves drawn into narratives that highlight the advances and historical relevance of the SECLA, learning about the legacies left by the entity, both in terms of its own collections and in wider contemporary ceramic production.

🕒 3:30 PM to 5:30 PM

€ Free
Booking required

♿ Activity not accessible to people with specific needs
No Parking reserved for people with reduced mobility

📍 Museu da Cerâmica
R. Dr. Ilídio Amado, s/n
2500-217 Caldas da Rainha

📧 mceramica@museusemonumentos.pt
www.museusemonumentos.pt/pt/museus-e-monumentos/museu-da-ceramica



CENTRE OF PORTUGAL

April 10, Cantanhede

“INDUSTRIAL SKETCHING” VISIT TO A DECOMMISSIONED QUARRY

Although few quarries are still operational, the municipality of Cantanhede was an important centre for extractive industries in the 20th and early 21st centuries. This experience includes a visit to a decommissioned quarry and its old manufacturing units, such as pavilions and lime kilns. The tour also includes opportunities to paint and sketch, allowing participants to capture the visual and historical nuances of the surrounding industrial environment in their drawings.

🕒 9:00 AM to 1:00 PM

€ Free
Booking required

♿ Activity partially accessible to people with specific needs
Parking reserved for people with reduced mobility

📍 Museu da Pedra
Largo Cândido dos Reis, 4
3060-174 Cantanhede

☎ (+351) 231 410 155
turismo@cm-cantanhede.pt
www.cm-cantanhede.pt/mcsite/Entidade/1744/Museu-da-Pedra



CENTRE OF PORTUGAL

April 11 and 13, Cantanhede

GUIDED TOUR OF CIAX AND WORKSHOP ON THE CONSTRUCTION OF TRADITIONAL MINIATURE STILTED BARNs

A visit to the Xávega Art Interpretation Centre provides visitors with the chance to explore the local fishing tradition via an exhibition of artefacts and tools linked to artisanal fishing. The experience draws to a close with the multimedia projection of a video that illustrates the process of waves breaking, providing an immersive perspective into the traditional activity.

The programme includes a workshop led by artisan Licínio Oliveira dedicated to recreating the iconic Stilted Barns of Tocha. During this activity, participants learn about the history of these stilted barns, their original use, construction methods, and the importance of preserving them, in an initiative that aims to keep memories alive and promote the region's cultural heritage.

🕒 3:00 PM to 4:30 PM

€ Free

♿ Activity accessible to people with specific needs
Parking reserved for people with reduced mobility

📍 Centro de Interpretação da Arte Xávega - CIAX
Rua Doutor Silva Pereira
Praia da Tocha
3060-692 Tocha

☎ (+351) 231 410 155
turismo@cm-cantanhede.pt
www.cm-cantanhede.pt/mcsite/Entidade
/3218/centro-de-interpretacao-de-
arte-xavega-(ciax)



CENTRE OF PORTUGAL

April 11 and 16, Cantanhede

VISIT TO THE CANTANHEDE WINERY

A visit to Adega de Cantanhede takes participants through the main production areas, such as the sparkling wine cellar, remuage and dégorgement areas, barrel room, stainless steel tanks, and grape unloading area. The tour includes the bottling lines and finished goods warehouse, coming to an end in the tasting room, where visitors can sample three wines: a sparkling, a red, and a white.

Throughout the tour, visitors can follow the production process, as well as the winery's history and achievements.

At the end of the visit, visitors can purchase wines at the winery's very own shop.

🕒 9:30 AM to 12:00 PM | 2:30 PM to 5:00 PM

€ € 12.00 | Per person
Discounts: 15% off listed store prices
Booking required

♿ Parking reserved for people with reduced mobility

📍 Adega de Cantanhede
Rua Eng.º Amaro da Costa, 117
3060-170 Cantanhede

☎ (+351) 231 410 155
turismo@cm-cantanhede.pt
www.cantanhede.com



CENTRE OF PORTUGAL

April 12, Cantanhede

TENET

TIMEX PORTUGAL'S ZX SPECTRUM NETWORK

Demonstration of the TENET system produced by TIMEX Portugal in 1986 at the LOAD ZX Museum, followed by a viewing of the documentary that portrays the restoration carried out by the LOAD ZX Museum team over two years and ends with a question-and-answer session. TENET consisted of a very low-cost computer network for schools, made using TIMEX or ZX Spectrum computers, but it was never commercialised. It came about as an attempt to save the Portuguese manufacturing unit's computer business, and had significant internationalisation potential, though, ultimately, no steps were taken in that direction due to licensing issues with British company Sinclair.

🕒 3:00 PM to 4:30 PM

€ Free
Booking required

♿ Activity partially accessible to people with specific needs
Parking reserved for people with reduced mobility

📍 Museu LOAD ZX
Largo do Conselheiro Ferreira Freire
3060-133 Cantanhede

📧 visit@loadzx.com
<https://loadzx.com/events>



CENTRE OF PORTUGAL

April 11, Castanheira de Pera

THE CASTANHEIRA DE PERA WOOL ROUTE VISIT TO THE ALBANO MORGADO FACTORY

A visit to the Albano Morgado S.A. factory provides an immersive experience into comprehensive, advanced wool transformation processes, showcasing key stages such as raw material selection, carding, spinning, warping, weaving, dyeing, finishing, quality control, and shipping. Representing the finest export quality within the Portuguese wool industry, the factory preserves the tradition of producing classic fabrics such as burel, surrobeco, and samarra.

🕒 2:00 PM to 5:00 PM

€ Free
Booking required

♿ Activity not accessible to people with specific needs
Parking reserved for people with reduced mobility

📍 Albano Morgado
Sarzedas de São Pedro
3280-100 Castanheira de Pera

📞 Albano Morgado S.A.
(+351) 236 430 270
info@amorgado.pt

Casa do Tempo | Posto de Turismo
(+351) 236 432 799
casadotempo@praiadasrocas.com
<https://lanificios.cm-castanheiradepera.pt>



CENTRE OF PORTUGAL

April 5 to 19, Covilhã

GUIDED TOURS OF NEW HAND LAB EXHIBITIONS

Housed in the former Júlio Afonso Factory and established in 2013, the NHL is a noteworthy collaborative project that fosters creativity, innovation, and entrepreneurship. It fosters co-creation between authors dedicated to promoting, preserving, and valuing the region's local resources. This visit provides the opportunity to explore resident artists' studios, take in their collective work, discover the areas and machinery that shaped the factory's history, and admire pieces created by international artists who carried out artistic residencies here.

🕒 2:30 PM to 5:00 PM

€ € 10.00
Free - children under 12 years
Group discounts - more than 11 people
Booking required

♿ Activity partially accessible to people with specific needs
No parking reserved for people with reduced mobility

📍 New Hand lab
Rua Mateus Fernandes - Travessa do Ranito
6200-521 Covilhã

☎ (+351) 963 614 774
comunicacao.newhandlab@gmail.com
IG @new.hand.lab



CENTRE OF PORTUGAL

April 10, Covilhã

PHOTOWALK THROUGH THE INDUSTRIAL HERITAGE OF COVILHÃ, FACTORY-CITY TRANSILANA® WOOL ROUTE - ITINERARY 1: GOLDRA RIVERSIDE

Providing a close look at the industrial heritage of Covilhã - a city that seamlessly combines its rich historical legacy with the energy of a modern academic campus and a still-operational thriving textile industry. Starting at the iconic Royal Cloth Factory, the walk explores the Goldra riverside area in search of striking elements, such as factory chimneys and other industrial remains, which are impressive due to both their symbolism and grandeur.

Participants share their photographs via WhatsApp, which are then projected into an improvised exhibition at the Veiga Royal Factory to round off the route and reveal the industrial heritage explored through the eyes of those present.

🕒 2:00 PM to 6:00 PM

€ Free
Booking required

♿ Activity partially accessible to people with specific needs
Parking reserved for people with reduced mobility

📍 Museu de Lanifícios UBI - Real Fábrica de Panos
R. Marquês d'Ávila e Bolama
6201-001 Covilhã

📞 (+351) 275 241 410
muslan@ubi.pt
www.museu.ubi.pt



CENTRE OF PORTUGAL

April 12, Covilhã

WALKSHOP NATURAL DYEING WORKSHOP THE COLORS OF THE RIBEIRA

Dyeing wool is the central theme of this activity, which is held at the Textile Workshop and begins with a short walk along the banks of the Goldra River to collect plants with natural dye properties or potential. Next, participants learn how to extract dyes from plants and explore formulas used by 18th-century master dyers. As part of the process, each participant composes a field notebook containing the plant collected, a sample of the dye produced, and the formula used, in an exploratory exercise in sustainable dyeing.

🕒 2:30 PM to 5:30 PM

€ Free
Booking required

♿ Activity partially accessible to people with specific needs
Parking reserved for people with reduced mobility

📍 Museu de Lanifícios UBI - Real Fábrica Veiga
Calçada do Biribau, s/n (junto ao Parque da Goldra)
6201-001 Covilhã

☎ (+351) 275 241 411
muslan@ubi.pt
www.museu.ubi.pt



CENTRE OF PORTUGAL

April 5, 12 and 19, Entroncamento

IRON ARCHITECTURE THEMATIC OBSERVATION TOUR

19th-century industrialisation gave iron a completely new character—so much so that it was seen as an entirely different material. This development made it possible to create innovative construction systems and structures that were bolder than ever before. The railway—the ultimate realm of iron—sparked the creation of specialised buildings and objects, while also reinventing others for new purposes. The National Railway Museum is home to numerous examples of this legacy, which are presented in the “Discovering Industrial Tourism” programme.

🕒 10:30 AM to 12:30 PM

€ € 8.00 | Ages 18 to 64
€ 5.00 | Students and youth aged 6 to 17
€ 4.50 | Ages 65 and over
Booking required

♿ Activity accessible to people with specific needs
Parking reserved for people with reduced mobility

📍 Museu Nacional Ferroviário
Rua Eng. Ferreira de Mesquita, 1-A
2330-152 Entroncamento

☎ (+351) 249 130 382
museu@fmnf.pt
www.fmnf.pt



CENTRE OF PORTUGAL

April 5, 12 and 19, Entroncamento

TRACE BY TRACE OBSERVATION AND PERSPECTIVE DRAWING WORKSHOP

Drawing is considered an essential tool for understanding your surroundings. To mark Industrial Tourism Week, an observation and perspective drawing session is proposed, specifically orientated.

The activity will take place in a railway environment, in the halls of the National Railway Museum.

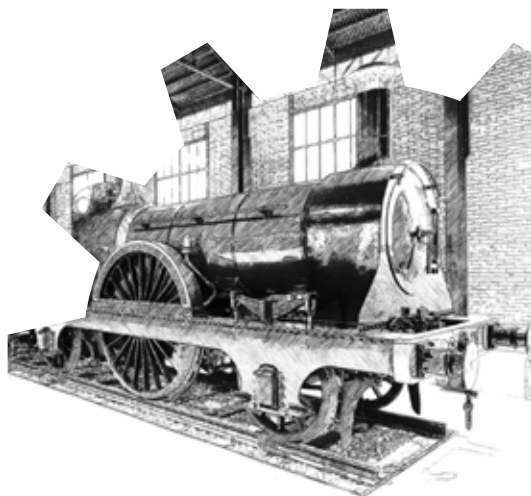
🕒 2:30 PM to 4:30 PM

€ € 8.00 | 18 to 64 years old
€ 5.00 | Students and young people between 6 and 17 years old
€ 4.50 | Over 65 years old
Booking required

♿ Activity accessible to people with specific needs
Parking reserved for people with reduced mobility

📍 Museu Nacional Ferroviário
Rua Eng. Ferreira de Mesquita, 1-A
2330-152 Entroncamento

☎ (+351) 249 130 382
museu@fmnf.pt
www.fmnf.pt



CENTRE OF PORTUGAL

April 5, Ílhavo

GUIDED VISIT

“WHEN POVERTY BOARDS THE SHIP, LOVE FLIES OUT OF THE PORTHOLE”

Guided tour of the Santo-André Museum Ship by a former cook on a cod fishing ship. Food and cooking secrets with a special focus on on-board cuisine. How to choose the best cod and discover all its by-products.

🕒 10:30 AM to 12:30 PM

€ € 3.50
Booking required

♿ Activity not accessible to people with specific needs
Parking reserved for people with reduced mobility

📍 Navio Museu Santo-André
Jardim Oudinot
3830-565 Gafanha da Nazaré

☎ (+351) 234 329 990
visitas.mmi@cm-ilhavo.pt



CENTRE OF PORTUGAL

April 8, 9, 15 and 16, Ílhavo

I AM A VISTA ALEGRE ARTIST!

The entry dates to the early days of Vista Alegre, used by artists to sketch designs and decorations. Once signed, these served as records of the brand's creations. Inspired by the museum's collections, participants design their own models and decorations, each creating an entry that will be signed by the respective author.

🕒 3:00 PM to 4:00 PM

€ € 3.00
Booking required

♿ Activity partially accessible to people with specific needs
Parking reserved for people with reduced mobility

📍 Museu da Vista Alegre
Lugar da Vista Alegre
3830-292 Ílhavo

📧 museu@vistatalegre.com
<https://vistaalegre.com/pt>



CENTRE OF PORTUGAL

April 12, Ílhavo

ONE CENTIMETRE PER YEAR OF HISTORY! THE ART OF CRAFTING THE TALHA 200 VASE!

To celebrate its 200th anniversary, Vista Alegre crafted a vase that stands at a height of two metres (representing 1 cm for each year of history). This monument, erected in the Vista Alegre factory's main square, symbolises a historic milestone for both the factory and brand. The piece was made possible thanks to the brand's know-how and unrivalled technical knowledge. The visit provides participants with insight into how the piece was manufactured and assembled by means of the hands and voices of the artisans themselves and the factory's technical manager.

🕒 10:00 AM to 11:30 AM

€ Free
Booking required

♿ Activity accessible to people with specific needs
No parking reserved for people with reduced mobility

📍 Fábrica da Vista Alegre
Lugar da Vista Alegre
3830-292 Ílhavo

📞 museu@vistaalegre.com
<https://vistaalegre.com/pt>



CENTRE OF PORTUGAL

April 16, Ílhavo

FROM THE SCALING TABLE TO THE DRYING TABLE

First, aboard the Santo André Ship Museum, and later during a visit to a cod processing and drying company, visitors will get the chance to compare traditional methods with modern technologies. An excellent opportunity to learn how to identify the finest cod.

🕒 2:00 PM to 5:00 PM

€ € 3.50
Booking required

♿ Activity not accessible to people with specific needs
Parking reserved for people with reduced mobility

📍 Navio Museu Santo-André
Jardim Oudinot
3830-565 Gafanha da Nazaré

☎ (+351) 234 329 686
turismo@cm-ilhavo.pt
www.visitilhavo.pt



CENTRE OF PORTUGAL

April 7 to 13, Leiria

EXPLORE THE INDUSTRIAL ACTIVITY AND HISTORY OF A CENTURY-OLD COMPANY

Visitors get the chance to explore how cement is produced - from raw material extraction to packaging - as well as seeing how the manufacturing process has evolved over time and learning about the development of the region where the Maceira-Liz Factory was established.

🕒 By appointment

€ Free

♿ Activity partially accessible to people with specific needs
Parking reserved for people with reduced mobility

📍 Museu do Cimento da Fábrica Maceira-Liz
2405-019 Maceira-Liz

☎ (+351) 914 535 721
www.secil.pt/



CENTRE OF PORTUGAL

April 5 to 19, Manteigas

WOOL CYCLE: FROM SHEARING TO FINAL PRODUCT

A guided tour of the entire textile process allows visitors to closely explore all the stages of Burel production – a traditional waterproof, very resistant fabric made up of 100% wool – along with all the other products made from Serra da Estrela Bordaleira sheep wool. The visit ends in the factory shop, where participants may purchase any item they have seen in production.

🕒 Weekdays: 9:00 AM to 11:30 AM | 2:00 PM to 4:00 PM
Saturdays: 10:00 AM to 1:00 PM
Sundays: By appointment

€ € 5.00
Discounts for children up to 12 years old

♿ Activity accessible to people with specific needs
Parking reserved for people with reduced mobility

📍 Ecolã
Amieiros Verdes
6260-028 Manteigas

☎ (+351) 969 925 377
(+351) 919 736 720
ecolaportugal@hotmail.com
www.ecolaportugal.com



CENTRE OF PORTUGAL

April 5 to 19, Manteigas

BUREL FACTORY VISITS

A textile art crafted by individuals with extensive knowledge, using processes that are as traditional as possible to deliver a product that preserves the cultural and industrial heritage of the mountains. Produced slowly employing sustainable processes and certifications, this cultural fabric is brought into being by textile innovators who perpetuate artisanal processes filled with meaning, tradition, and ingenuity.

🕒 11:00 AM | 4:00 PM

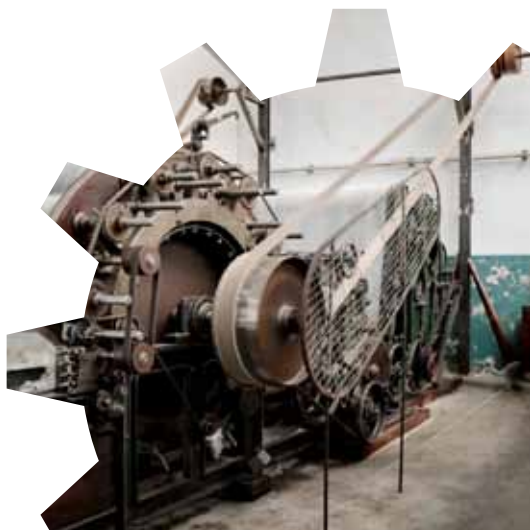
€ € 5.00

Discounts: Design, Textile, and Fashion College students

♿ Activity accessible to people with specific needs
Parking reserved for people with reduced mobility

📍 Burel Factory
Amieiros Verdes
6260-028 Manteigas

☎ (+351) 913 286 420
burelmanteigas@burelfactory.com
www.burelfactory.com



CENTRE OF PORTUGAL

April 5 to 12, Marinha Grande

GUIDED TOUR OF A WORKING INDUSTRIAL UNIT

PLIMAT began operations in 1980, specialising in the production of high-quality plumbing accessories. This guided tour provides comprehensive insight into the production process, including recycling and sorting processes. Visitors can also observe the rigorous quality control conducted during production and in the laboratory, as well as learning about the stages of product storage and shipping to customers.

🕒 10:30 AM to 12:00 PM | 2:30 PM to 4:00 PM

€ Free
Booking required

♿ Activity not accessible to people with specific needs
No parking reserved for people with reduced mobility

📍 PLIMAT
Rua da Alemanha, 35
Zona Industrial de Casal da Lebre
2430-028 Marinha Grande

☎ (+351) 244 572 323



CENTRE OF PORTUGAL

April 5 to 11, Marinha Grande

EXPERIENCE WORKING WITH GLASS TORCH GLASSWORKING AND GLASS CUTTING

Visitors get the chance to observe two glassworking techniques in action and try their hand at creating a glass piece using a blowtorch and/or polishing a glass item using cutting techniques. All activities are carried out under the guidance of master craftsmen who practice their craft daily in the workshops of the Glass Museum.

🕒 10:30 AM to 11:30 AM | 2:00 PM to 4:00 PM - tuesday to sunday

€ Free
Maximum of 3 participants per hour, per technique
For ages 15 and up, under the responsibility of accompanying adults
Booking required by March 28

♿ Activity not accessible to people with specific needs
Parking reserved for people with reduced mobility

📍 Oficinas do Museu do Vidro
Praça Guilherme Stephens
2430-522 Marinha Grande

☎ (+351) 244 573 377
museu.vidro@cm-mgrande.pt



CENTRE OF PORTUGAL

April 9 and 16, Marinha Grande

FROM “MATTER TO FORM” CRISAL HAS BEEN SHAPING THE HISTORY OF GLASS FOR EIGHT DECADES

The tour covers the entire fascinating process of automatic glass production, from “Matter to Form”, that is, from the storage of the raw material that is then melted at around 1550 °C in Crisal’s two furnaces, through to the moulding of each piece, where an incandescent drop is subject to blowing or pressing before emerging in the shape of a glass, chalice, cup, or mug, among other items. Next, visitors pass through the annealing area and then observe the careful selection of each item, which is subsequently prepared for shipment to customers or sale at the Crisal Store, where the tour comes to an end.

🕒 10:00 AM | 2:00 PM

€ Free
Booking required

♿ Activity not accessible to people with specific needs
No parking reserved for people with reduced mobility

📍 Crisal
Rua de Portugal, Lote 1
Zona Industrial da Marinha Grande
2430-028 Marinha Grande

📧 communication@lcglass.com



CENTRE OF PORTUGAL

April 5 and 13, Marinha Grande

PAPER CHASE IN THE NEIGHBORHOOD

The activity will take place outdoors, in the neighbourhood surrounding the Glass Museum, where participants will have the opportunity to learn more about the history of glass and the curiosities of this place.

🕒 5 April – 3:30 PM to 5:00 PM
13 April – 11:00 AM to 12:30 PM

€ Free
Groups of up to 6 people, with a supervisor
Booking required by March 28

♿ Activity not accessible to people with specific needs
Parking reserved for people with reduced mobility

📍 Museu do Vidro
Praça Guilherme Stephens
2430-522 Marinha Grande

☎ (+351) 244 573 377
museu.vidro@cm-mgrande.pt



CENTRE OF PORTUGAL

April 12 to 16, Marinha Grande

DEMONSTRATION OF HANDMADE GLASS PRODUCTION

Demonstrations are held at the Glass Studio – PoeirasGlass, located next to the Marinha Grande Glass Museum. This space recreates the atmosphere of a glass factory, allowing visitors to watch live demonstrations of artisanal glassmaking. During the demonstration of how a piece is crafted, the Master Glassmaker shares the history of glass and explains the techniques involved in the manual production process.

🕒 2:00 PM to 4:00 PM

€ Free
Booking required

♿ Activity partially accessible to people with specific needs
Parking reserved for people with reduced mobility

📍 Estúdio de Vidro - Poeiras Glass
Praça Guilherme Stephens
Edifício da Resinagem, Lj 7
2430-091 Marinha Grande

☎ (+351) 244 573 377
museu.vidro@cm-mgrande.pt



CENTRO DE PORTUGAL

April 12 to 16, Marinha Grande

GLASSBLOWING EXPERIENCE

Visitors have the opportunity to blow glass using a glassblower's blowpipe, experiencing the sensation of blowing and handling the blowpipe. This activity is conducted under the guidance of Master Glassblower Alfredo Poeiras. During the activity, the Master Glassblower shares the history of glass and explains the techniques used in the artisanal glassmaking process.

🕒 4:00 PM to 5:00 PM

€ Free
Booking required by 28/03
Maximum of 8 participants
For ages 10 and above, under the responsibility of their guardians

♿ Activity accessible to people with specific needs
Parking reserved for people with reduced mobility

📍 Estúdio de Vidro - PoeirasGlass
Praça Guilherme Stephens
Edifício da Resinagem, Lj 7
2430-091 Marinha Grande

☎ (+351) 244 573 377
museu.vidro@cm-mgrande.pt



CENTRE OF PORTUGAL

April 5 to 19, Porto de Mós

GUIDED TOUR WITH FORMER VITÓRIA CARPET FACTORY WORKERS

The MIAT – Industrial and Artisanal Textile Museum, housed in the century-old facilities of a former carpet factory, celebrates the industrial and working-class heritage that shaped Mira de Aire and Minde into a major hub of Portugal's 20th-century textile industry. Home to a unique collection, the museum documents the entirety of the wool cycle, from shearing and washing to carding, spinning, dyeing, and weaving. Guided tours led by former workers of the Vitória Carpet Factory provide an authentic, immersive experience, revealing stories and memories of a significant industrial past.

🕒 3:00 PM to 4:30 PM

€ € 6.50
€ 4.50 | Ages 65 and over
€ 4.50 | Children aged 5 to 12
Booking required

♿ Activity partially accessible to people with specific needs
Parking reserved for people with reduced mobility

📍 MIAT – Museu Industrial e Artesanal do Têxtil
Rua das Grutas, 593
2485-059 Mira de Aire

☎ (+351) 925 986 502
miat@miat.pt
www.miat.pt



CENTRE OF PORTUGAL

April 12 and 16, Seia

CANAL GUARD TRAILS

A night walk between the Lagoa Comprida Dam (Marques da Silva Dam) and the loading chamber of the Sabugueiro I Hydroelectric Power Plant allows participants to experience the night work of a very important human player in the production of electrical energy in the Serra da Estrela - the canal guard. This is a straightforward walk that presents no significant challenges, though participants are advised to wear safe, comfortable footwear, bring a torch, and wear thermal protective clothing, even if the weather is mild during the day.

🕒 9:00 PM to 10:30 PM
Departure from the Museum of Electricity at 8:00 PM

€ € 10.00
Booking required

♿ Activity not accessible to people with specific needs
Parking reserved for people with reduced mobility

📍 Museu Natural da Electricidade
Senhora do Desterro
6270 São Romão

☎ (+351) 238 316 276
museudaelectricidade@cm-seia.pt
<https://visitseia.pt/museus/museu-natural-da-electricidade-de-seia/>



CENTRE OF PORTUGAL

April 5, Sever do Vouga

THEATRE PLAY - “THE MINER”

A story that captures the life of a miner, symbolising the stories of so many who toiled tirelessly to support their families. It personifies the experiences of hundreds of residents of Sever do Sul who, over the decades, braved the challenges of mining, motivated by love for their families and the hope for a better future. Between darkness and light, the journey reveals the fears, dreams, anguish, and hopes of those who led lives marked by sacrifice. A story intertwined with the identity of the municipality itself, it evokes the memory and courage of the workers who call it home.

🕒 5:00 PM to 6:00 PM

€ Free
Booking required

♿ Activity accessible to people with specific needs
Parking reserved for people with reduced mobility

📍 Museu Municipal de Sever do Vouga
Rua do Parque, 80
3740-260 Sever do Vouga

☎ (+351) 234 597 079
apoio@mm-sever.pt
www.mm-sever.pt



CENTRE OF PORTUGAL

April 19, Sever do Vouga

INTO THE DEPTHS OF THE EARTH THE LEGACY OF ABANDONED MINES

An exploration of the Rio Mau's underground tunnels, following a water route that unveils the hidden side of this river, which has its source in the Arestal Hills. In the area of the former Braçal and Malhada Mines complex, mining operations, which began in 1836, transformed the landscape with pipes, tunnels, and channels built to divert water and power hydraulic wheels. This route allows visitors to explore old tunnels and galleries, spotting traces of ore, feeling the humidity, and imagining the miners' gruelling work, guided only by the flame of their carbide lamps. A unique experience that combines history, exploration, and memories of mining times.

🕒 2:30 PM

€ € 38.00
Booking required

♿ Activity not accessible to people with specific needs
No parking reserved for people with reduced mobility

📍 Minas do Braçal e Malhada
Silva Escura
3740 Sever do Vouga

☎ (+351) 234 597 079
apoio Museu@cm-sever.pt
www.mm-sever.pt/minas/historia



CENTRE OF PORTUGAL

April 8 to 12, Tomar

SKETCHES OF INDUSTRIAL MEMORY

This activity invites the artistic community and the general public to explore and interpret striking elements of the Levada de Tomar Cultural Complex's industrial heritage, through drawing. Through lines and details, participants will get the chance to capture the textures, shapes, and stories that characterise the unique setting. The initiative will culminate in the publication of a brochure showcasing the work produced.

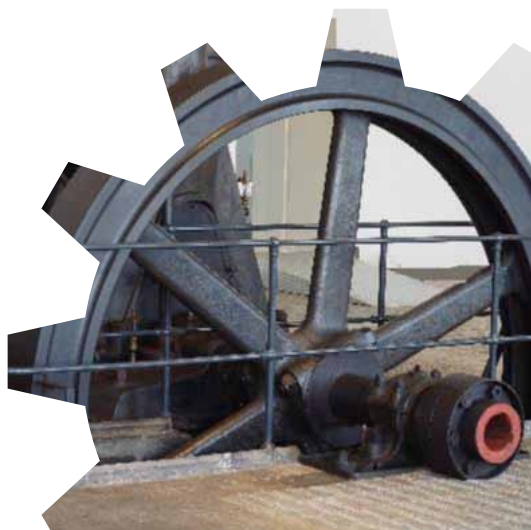
🕒 10:00 AM to 12:00 PM | 2:00 PM to 5:00 PM

€ Free
Booking required

♿ Activity partially accessible to people with specific needs
No parking reserved for people with reduced mobility

📍 Complexo Cultural da Levada de Tomar
Rua Carlos Everard
2300-561 Tomar

☎ (+351) 249 329 814
museologia@cm-tomar.pt
<https://levada.cm-tomar.pt>



CENTRE OF PORTUGAL

April 12 and 18, Torres Novas

SCIENCE CLUB

Educational activities designed to engage the community in a dynamic and stimulating environment, fostering learning, reflection, and experimentation. Making use of materials, tools, and techniques, these initiatives provide a hands-on approach, encouraging the sharing of knowledge and experiences. The activities are notable for their focus on scientific discovery and for seeking to raise awareness of critical topics such as environmental sustainability and energy transition (sun, wind, and river water). The activities focus on exploring renewable energy sources, fostering critical awareness and practices that contribute to building a more sustainable future.

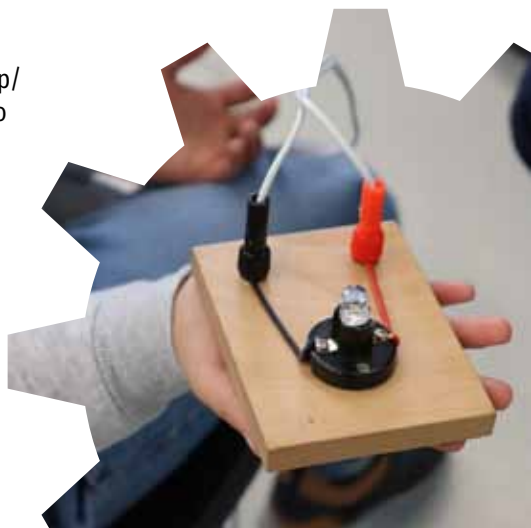
🕒 10:30 AM to 12:00 PM

€ Free of charge
Booking required

♿ Activity not accessible to people with specific needs
Parking reserved for people with reduced mobility

📍 Núcleo Museológico do Caldeirão
Rua do Caldeirão
2350-690 Torres Novas

☎ (+351) 249 812 535
agenda.museu@cm-torresnovas.pt
museu.municipal@cm-torresnovas.pt
<https://museu.cm-torresnovas.pt/index.php/nucleos-museologicos/central-do-caldeirao>



CENTRE OF PORTUGAL

April 18, Torres Novas

SPINNING CRAFTS

This workshop delves into the crafts of an era when factories encompassed management, production, storage, marketing, distribution, communication, and even social welfare. Through the stories of the workers themselves, participants are guided on a historical journey of this industry, which is deeply linked to the Almonda River and the development of Torres Novas.

🕒 10:30 AM to 12:00 PM

€ Free
Booking required

♿ Activity not accessible to people with specific needs
Parking reserved for people with reduced mobility

📍 Núcleo Museológico do Caldeirão
Rua do Caldeirão
2350-690 Torres Novas

☎ (+351) 249 812 535
agenda.museu@cm-torresnovas.pt
museu.municipal@cm-torresnovas.pt
<https://museu.cm-torresnovas.pt/index.php/nucleos-museologicos/central-do-caldeirao>



CENTRE OF PORTUGAL

April 5 to 12, Torres Novas

JOURNEY THROUGH THE HISTORY OF RENOVA

The starting point for this experience is the historic site that has housed the Renova brand since 1818, next to the source of the Almonda River. Nestled in a landscape with rich geological and archaeological significance, the factory stands as a testament to generations devoted to creating one of Portugal's most iconic brands. The visit continues at the Renova 2 unit, where fibres are transformed into products used by millions of people around the world. Lasting approximately 2 hours, the tour includes an introduction to the history of Renova, visits to the recycling, production, transformation and storage areas, as well as other areas of the factory. The itinerary also includes the Factory Shop, where visitors can enjoy exclusive opportunities, and the Path, leading them closer to the source of the Almonda River.

🕒 10:00 AM to 5:00 PM

€ Free
Booking required

♿ Activity partially accessible to people with specific needs
Parking reserved for people with reduced mobility

📍 Renova
Rua Marginal, 33
2354-001 Zibreira

☎ (+351) 249 830 200
info@renova.pt
<https://www.myrenova.com/pt/visite-a-renova/visitar-renova.html>



CENTRE OF PORTUGAL

April 12, Torres Vedras

BROOM WAGON - PAPER CHASE

This activity takes place at the Joaquim Agostinho Cycling Museum. The Broom Wagon is a vehicle used in cycling events to “sweep up” straggling athletes. In this paper hunt, participants learn various fun facts about cycling and the stories presented by the museum. The team that completes the course the fastest wins, while the others race to avoid being caught by the Broom Wagon.

🕒 11:00 AM to 12:30 PM

€ Free
Booking required

♿ Activity partially accessible to people with specific needs
Parking reserved for people with reduced mobility

📍 Museu do Ciclismo Joaquim Agostinho
Hipólito Center Park, fração G
2560-628 Bairro Arenas - Torres Vedras

☎ (+351) 261 320 740
mc.joaquimagostinho@cm-tvedras.pt
<https://mcjoaquimagostinho.pt/>



AZORES

ALENTEJO AND RIBATEJO

ALGARVE

CENTRE OF PORTUGAL

OPORTO AND NORTH

LISBON REGION

Oporto AND NORTH

April 5, Cabeceiras de Basto

TEXTILE RESEARCH AND PRODUCTION LABORATORY WORKSHOP

The establishment of the Fab Lab Casa da Lã de Bucos provides an innovative space for research and artistic practice, dedicated to exploring the world of textiles and its connections with subjects such as ethnography, heritage, history, and science. This Research and Manufacturing Laboratory, which combines an analogue approach with the potential integration of digital technologies, aims to serve as a platform from which to promote Portugal's natural heritage and locally sourced products. It highlights the immense potential of working with wool, preserving and continuing the legacy of the Women of Bucos.

🕒 10:00 AM to 5:00 PM

€ Free
Booking required

♿ Activity partially accessible to people with specific needs
Parking reserved for people with reduced mobility

📍 Casa da Lã
Travessa da Escola Bucos, 15
4860-122 Cabeceiras de Basto

☎ (+351) 253 751 258
casadala@cabeceirasdebasto.pt
<https://cabeceirasdebasto.pt>



Oporto and North

April 10, Cabeceiras de Basto

THE MECHANISMS OF THE ARCO DE BAÚLHE RAILWAY STATION

Arco de Baúlhe, which once served as the terminus of the Vale do Tâmega Line, is home to the Arco de Baúlhe Railway Museum, an establishment that takes visitors on a unique journey back in time. The station building is particularly notable for its tiled panels, crafted in 1940, while the surrounding area showcases remnants of the narrow-gauge railway, including tracks, sleepers, and switch points. Additionally, a turntable, a water crane, and a coal depot are preserved, keeping the memory of railway history alive.

🕒 10:00 AM to 12:00 PM

€ Free

♿ Activity accessible to people with specific needs
Parking reserved for people with reduced mobility

📍 Núcleo Ferroviário de Arco de Baúlhe
Rua da Estação, Arco de Baúlhe
4860-068 Cabeceiras de Basto

☎ (+351) 253 666 350
<https://museuterrasbasto.wordpress.com/informacoes-uteis/>



Oporto and North

April 8, Freixo de Espada à Cinta

HANDLOOM WEAVING GUIDED BY ARTISANS

In this workshop, visitors will learn about the loom, a weaving tool used by artisans to create pieces by interlacing threads. The structure consists of a frame where vertical threads (warp) and horizontal threads (weft) interlace to produce fabrics made from silk extracted from cocoons. The process produces no ecological footprint whatsoever, as products made on handlooms make use of natural materials and don't generate any residue or waste.

🕒 2:30 PM to 4:30 PM

€ Free
Booking required

♿ Activity accessible to people with specific needs
No parking reserved for people with reduced mobility

📍 Museu da Seda e do Território de Freixo de Espada à Cinta
Largo do Outeiro, 13
5180-161 Freixo de Espada à Cinta

📞 museu.seda@cm-fec.pt
www.cm-freixoespadacinta.pt



OPORTO AND NORTH

April 18, Freixo de Espada à Cinta

DEMONSTRATION SILK EXTRACTION AND OBSERVING SPECIALISED SKILLS

An activity that allows visitors to learn about the silk extraction process: cocoons are immersed in a copper boiling pot containing water heated to 90 degrees, and - aided by a broom made from salt water false willow - a delicate silk thread is extracted from each cocoon. A single thread is created by combining 20 of these delicate threads and spinning them in a “spinner” – a tool used to extract silk. This thread is then folded using a “yarn swift” (a type of tool) and wound around small cards.

🕒 2:30 PM to 4:00 PM

€ Free
Booking required

♿ Activity accessible to people with specific needs
Parking reserved for people with reduced mobility

📍 Museu da Seda e do Território de Freixo de Espada à Cinta
Largo do Outeiro, 13
5180-161 Freixo de Espada a Cinta

📞 museu.seda@cm-fec.pt
www.cm-freixoespadacinta.pt



OPORTO AND NORTH

April 5 to 19, Gondomar

FILIGREE ROUTE

The Filigree Route is a tourist attraction centred around Gondomar's primary economic activity, goldsmithing, earning it the title of the Goldsmithing Capital of Portugal. The artisanal production of filigree is carried out in small-scale, family-run workshops, using techniques passed down from generation to generation. The visit begins at the Gondomar Municipal Filigree Museum, continuing to one of the six participating workshops - a unique and authentic experience that connects participants to authentic Gondomar goldsmiths and the process of artisanal production. The experience is complemented by Filigree workshops at the CINDOR - a school dedicated to the goldsmithing arts, where visitors produce a piece that they can then take home with them.

🕒 9:00 AM to 12:30 PM | 2:00 PM to 5:30 PM
Closed on Mondays, Sundays, and the public holiday on April 18

€ € 2.00
Free - locals and residents of the municipality | Under 18 years | over 65 years
Booking required

♿ Activity partially accessible to people with specific needs
Parking reserved for people with reduced mobility

📍 Museu Municipal da Filigrana de Gondomar
Travessa da Convenção de Gramido, 41
4420-416 Valbom

📞 (+351) 224 664 310
(+351) 932 003 358
turismo@cm-gondomar.pt
www.visitgondomar.cm-gondomar.pt



OPORTO AND NORTH

April 6, Macedo de Cavaleiros

TOURING THE SILK PALACE THE CHACIM ROYAL FILATORY

Visit to the Interpretation Centre to discover the history of sericulture and learn about the Piedmontese spinning method, the silkworm cycle and the historical and cultural importance of this activity in the region. During the visit, visitors can explore the functioning of the round mill and the archaeological remains that bear witness to its legacy, visit the ruins of the old factory and the village of Chacim, where traces of this precious industrial heritage can still be seen.

🕒 10:00 AM to 12:30 PM

€ Free
Booking required

♿ Activity partially accessible to people with specific needs
No parking reserved for people with reduced mobility

📍 Centro Interpretativo do Real Filatório de Chacim
5340-092 Chacim

☎ (+351) 278 097 875
(+351) 278 099 166
museus@cm-macedodecavaleiros.pt
turismo@geoparkterrasdecavaleiros.com
www.cm-macedodecavaleiros.pt



OPORTO AND NORTH

April 9, Marco de Canaveses

SENSORY TOUR OF THE DURIENSE FACTORY

An educational visit to an iconic local establishment, providing a firsthand look at the stages of biscuit production undergone at the Duriense Factory. Recipes are kept confidential, but the tour brings participants into close contact with the creators of these regional sweet treats, which are partially handmade. This local product, cherished by a family dedicated to sustainability, is a key part of the region's culinary heritage. The experience ends with a tasting session.

🕒 11:00 AM to 12:00 PM | 2:30 PM to 3:30 PM

€ Free
Booking required

♿ Activity partially accessible to people with specific needs
Parking reserved for people with reduced mobility

📍 Fábrica Duriense
Rua de Eiró, 503
4634-738 Soalhães

☎ (+351) 255 531 187
geral@fabricaduriense.pt
visit.marcodecanaveses.pt



Oporto and North

April 10, Marco de Canaveses

VISIT TO THE STONE MUSEUM

A visit to the Stone Museum takes participants on a journey of discovery of one of the oldest art forms in the region. Three distinct sections – “Man and Stone”, “Stone in the Arts”, and “Stone and Local Development” – showcase tools, ancient stones, and some of the award-winning art from the first Stone Biennale, as well as various forms of granite and their practical and artistic uses. The Museum is part of the Mines Route - Points of Mining and Geological Interest in Portugal and showcases the extraction and transformation process. The tour then rounds off with a tasting of the famous Duriense Factory biscuits.

🕒 10:30 AM to 12:30 PM | 3:00 PM to 4:30 PM

€ Free
Booking required

♿ Activity partially accessible to people with specific needs
Parking reserved for people with reduced mobility

📍 Museu da Pedra
Avenida de São João, 900
4575-029, Alpendorada, Várzea e Torrão

📞 (+351) 255 538 800
info@cm-marco-canaveses.pt
turismo@cm-marco-canaveses.pt
visit.marcodecanaveses.pt



Oporto AND NORTH

April 5, 6, 11, 12, 13, 18 and 19, Matosinhos

TOURS OF THE TITAN AT THE PORT OF LEIXÕES

Visit one of the iconic Titans at the Port of Leixões in Matosinhos. A monumental, one-of-a-kind crane, it provides privileged insight into the age of iron architecture, engineering, and steam power. A metallic 'Colossus', it played a key role in the construction of the Port of Leixões, the largest engineering project carried out in Portugal in the 19th century. The activity allows participants to explore the crane from base to top while learning about its history and significance in the development of the Port of Leixões.

🕒 10:00 AM to 5:00 PM

€ Free

♿ Activity not accessible to people with specific needs
Parking reserved for people with reduced mobility

📍 Titan do Porto de Leixões
Av. General Norton de Matos, s/n
4450-208 Matosinhos

☎ (+351) 229 990 700
cruise.porto@apdl.pt
www.apdl.pt/negocio/visitas/



Oporto and North

April 5 and 6, Matosinhos

GUIDED TOUR OF THE LEÇA GREEN INDUSTRIAL CORRIDOR

With the rise of industrialisation in inland Matosinhos, the entire Leça River valley saw a boom in operations that would soon transform its rural character. The Leça River was a crucial element in this process, providing water to a range of industries. On this tour, participants will learn about the history and development of industrial operations carried out along the river, and how it still shapes the landscape and the area's industrial and economic vitality to this day.

🕒 3:30 PM – April 5, visit in Portuguese
3:30 PM – April 6, visit in English

€ Free

♿ Activity partially accessible to people with specific needs
Parking reserved for people with reduced mobility

📍 Ponte da Pedra
Rua da Ponte da Pedra
4465-287 Leça Do Balio

📧 turismo@cm-matosinhos.pt
www.cm-matosinhos.pt
www.matosinhoswbf.pt



Oporto AND NORTH

April 7, 8, 10, 11, 14, 15 and 17, Matosinhos

TOUR OF THE PINHAIS CANNING FACTORY

The guided tour of Conservas Pinhais, with 104 years of history, offers a unique experience, allowing participants to learn in detail about the traditional artisanal process through which sardines are transformed into the canned delicacies that reach the table. During the tour, visitors can explore the rich history of this craft and witness the dedication and care invested in each stage of production. The visit concludes with an exclusive tasting of Conservas Pinhais most iconic flavors.

🕒 9:30 AM | 4:00 PM

€ € 18.00 | Includes a can
Booking required

♿ Activity partially accessible to people with specific needs
No parking reserved for people with reduced mobility

📍 Fábrica Conservas Pinhais
Av. Menéres, 700
4450-189 Matosinhos

☎ (+351) 932 711 149
(+351) 937 081 986
booking@pinhais.pt
<https://visitar.conservaspinhais.com>



Oporto AND NORTH

April 5, 9, 10, 11, 12, 16, 17, 18 and 19, Matosinhos

VISIT TO SUPER BOCK BEER HOUSE

Super Bock Casa da Cerveja is a tour inside the production centre of the Super Bock Group. In this immersive experience in the world of beer, visitors can learn about the brewing process, from the raw materials that give rise to it, to the production of the wort, fermentation and ending with the filling, where they can hear the clinking of the bottles. There is also space to discover the history and curiosities of the Super Bock brand, one of the most famous national brands. The senses are put to the test at the end with a tasting of two styles of beer paired with small delicacies.

🕒 10:30 AM | 3:00 PM

€ € 5.00 to € 15.00

♿ Activity accessible to people with specific needs
Parking reserved for people with reduced mobility

📍 Super Bock Casa da Cerveja
Via Norte
4466-955 Leça do Balio

📞 reservas@superbockcasadacerveja.pt
<https://www.superbockcasadacerveja.pt/visitas/>



OPORTO AND NORTH

April 12, Matosinhos

MATOSINHOS FISHING INDUSTRY AND OPERATIONS – HISTORY AND IMPACT ON THE CITY’S INDUSTRIAL DEVELOPMENT

Visit both museums in Matosinhos to learn about the origins of fishing in the area, the development of the industry over time, hear the stories told by Matosinhos’ fishermen, and even see a shirt belonging to one of the 152 sailors who lost their lives in the largest maritime disaster in Portuguese coastal history, when four sardine fishing trawlers sank on the 2nd of December 1947.

🕒 3:00 PM to 5:00 PM

€ Free
Booking required

♿ Activity partially accessible to people with specific needs
Parking reserved for people with reduced mobility

📍 Museu da Memória de Matosinhos
Rua de Alfredo Cunha, 58
4450-020 Matosinhos

📞 mumma@cm-matosinhos.pt
www.cm-matosinhos.pt
www.matosinhoswbf.pt



Oporto AND NORTH

April 13, Matosinhos

CANNING INDUSTRY ARCHEOLOGY ANGEIRAS ROMAN TANKS

The tour provides insight into one of the first “canning industries” on record in the country. It is a magnificent example of Roman industrial architecture and is the only one of its kind in the North region of Portugal. Six sets of tanks, making up a total of 32, were used for salting fish and producing preserves such as garum, which were very popular at the time. Next to the tanks, a pebble and clay section of flooring bordered by low walls was used to extract salt from seawater.

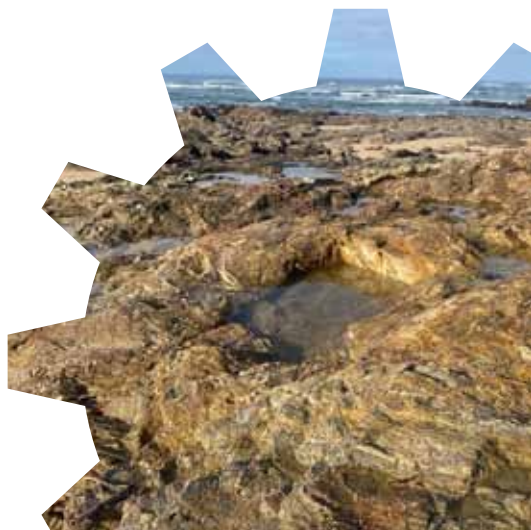
🕒 10:00 AM to 12:00 PM

€ Free
Booking required

♿ Activity partially accessible to people with specific needs
Parking reserved for people with reduced mobility

📍 Casa do Mar
Av. Praia de Angeiras
4455-103 Lavra

📞 mumma@cm-matosinhos.pt
www.cm-matosinhos.pt
www.matosinhoswbf.pt



OPORTO AND NORTH

April 5, Matosinhos

PAIRING TASTING: CANNED GOODS AND BEER

Matosinhos preserves are a world-renowned gastronomic product. The beer produced in Matosinhos has also gained international recognition. Join us for this tasting experience to explore and discover the flavours of the sea paired with the finest beers and uncover surprising combinations featuring agri-food products from Industrial Tourism Network partners in Matosinhos.

🕒 6:00 PM

€ Free
Booking required

♿ Activity accessible to people with specific needs
Parking reserved for people with reduced mobility

📍 Mosteiro de Leça do Balio
Rua do Mosteiro
4465-703 Leça do Balio

📞 turismo@cm-matosinhos.pt
www.cm-matosinhos.pt
www.matosinhoswbf.pt



Oporto and North

April 5 to 19, Melgaço

PROCESS TOUR FROM GOAT TO CHEESE

In this experience, participants get the chance to experience the milking process, come into direct contact with the goats, and visit the cheese factory, rounding off with artisanal cheese tasting. An experience that combines tradition, flavour, and connection with nature.

🕒 11:00 AM to 12:30 PM | 3:00 PM to 4:30 PM

€ € 5.00
Free for children up to 12 years old
Booking required

♿ Activity partially accessible to people with specific needs
Parking reserved for people with reduced mobility

📍 Prados de Melgaço
Quinta do moinho, Lugar de Malhagrilos, Prado
4960-320 Melgaço

☎ (+351) 251 414 093
geral@pradosdemelgaco.pt
www.pradosdemelgaco.pt



OPORTO AND NORTH

April 5 to 19, Oliveira de Azeméis

TOUR OF SIMOLDES

Guided tour of a mould manufacturing company, including testing facilities, mass production areas, and a plastic parts injection company. Focused mainly on the automotive industry, this experience provides a unique look into the production processes, technologies applied, and innovative solutions developed by the company up close.

🕒 Subject to availability

€ Free
Booking required

♿ Activity partially accessible to people with specific needs
Parking reserved for people with reduced mobility

📍 Simoldes
Rua Comendador António Silva Rodrigues, 100
3720-502 Santiago de Riba-Ul - Oliveira de Azeméis

📞 ines.soares@simoldes.com
www.simoldes.com/turismo-industrial



OPORTO AND NORTH

April 5 to 19, Oliveira de Azeméis

GUIDED TOURS TO THE MILL AND BREAD MUSEUM

An immersive experience at the Mill and Bread Museum Centre, the main hub within the Molinological Theme Park, kicks off with an introduction to the park's mission. This is followed by a visit to the mills, where the grinding process for various cereals is demonstrated. The route also includes a small museum, which displays the traditional tools used in mills by both millers and bakers. To conclude, visitors can watch traditional Padas and Regueifas de Ul being made, which are baked in a wood-fired oven.

🕒 10:00 AM to 11:00 AM | 3:00 PM to 4:00 PM
Every day except Mondays

€ Free
Booking required

♿ Activity partially accessible to people with specific needs
No parking reserved for people with reduced mobility

📍 Parque Temático Molinológico
Rua da Ponte da Igreja, 193
3720-604 Ul

☎ (+351) 925 661 458
geral.aptm@gmail.com
<https://ptm.cm-oaz.pt/>



Oporto AND NORTH

April 5 and 6, 12 and 13, 16 and 17, Oliveira de Azeméis

GLASS WORKSHOP - BERÇO VIDREIRO

This workshop, held at 'Berço' and led by Master Glassmaker Alfredo Morgado, aims to showcase artisanal glass production techniques and the importance of this activity in the municipality of Oliveira de Azeméis since the founding of one of the country's first factories here in 1528.

🕒 11:00 AM to 12:30 PM

€ Free
Booking required

♿ Activity partially accessible to people with specific needs
No parking reserved for people with reduced mobility

📍 Parque de La Salette – Berço Vidreiro
Rua Domingos José da Costa
3720-291 Oliveira de Azeméis

☎ (+351) 256 674 463
turismo@cm-oaz.pt
www.cm-oaz.pt



OPORTO AND NORTH

April 5 to 12, Oliveira de Azeméis

INDUSTRIAL VISIT TO NOVARROZ - PRODUTOS ALIMENTARES

A guided tour of factory facilities to explore and learn about the rice production process, from husking to packaging, as well as learning about diverse varieties of rice and packaging formats.

- ☑ Daytime
- € Free
Booking required
- ♿ Activity partially accessible to people with specific needs
Parking reserved for people with reduced mobility
- 📍 Novarroz
Rua da Moura, 43
3720-581 Ul
- ☎ info@novarroz.pt
www.novarroz.pt



OPORTO AND NORTH

April 9 and 16, Oliveira de Azeméis

UI BREAD WORKSHOP

In this activity, participants will be able to watch and get involved in the entire process of concocting regional delicacies, guided by a resident Baker. A process that starts with lighting a wood-fired oven, involves kneading and rolling out dough, and ends with tasting freshly baked Padas and Regueifas de Ul, providing a close-up look at these traditions and the importance of this centuries-old art form.

🕒 3:00 PM

€ Free
Booking required

♿ Activity partially accessible to people with specific needs
No parking reserved for people with reduced mobility

📍 Parque Temático Molinológico
Rua da Ponte da Igreja, 193
3720-604 Ul

☎ (+351) 925 661 458
geral.aptm@gmail.com
<https://ptm.cm-oaz.pt/>



Oporto AND NORTH

April 9, 10 and 15, Paredes

URBAN SKETCHING CAPTURING THE ESSENCE OF THE FURNITURE INDUSTRY

This activity focuses on industrial tourism and aims to capture the essence of historic industrial sites, as well as their unique architecture, through quick sketches produced from real-time observations. The goal is to create an artistic representation of the spaces, capturing details and textures that reflect the identity of the area.

🕒 9:00 AM to 12:30 PM

€ Free
Booking required

♿ Activity partially accessible to people with specific needs
No parking reserved for people with reduced mobility

📍 Avenida da República, s/n
4580-130 Paredes

📞 turismoindustrial@cm-paredes.pt
www.cm-paredes.pt



Oporto AND NORTH

April 12 and 16, Paredes

WOODCARVER FOR A DAY

This activity introduces participants to traditional carpentry and carving practices, providing an overview of how a workshop works, and presenting types of wood, techniques, tools, and the language of the trade. Participants are invited to use carver's tools and develop their art with the help of master woodcarvers. The workshop takes place in Mr Fialho's workshop, in Rebordosa.

🕒 2:30 PM to 5:30 PM

€ € 12.50
Booking required

♿ Activity not accessible to people with specific needs
No parking reserved for people with reduced mobility

📍 Móveis Fialho
Rua da Quintã de Baixo, 117
4585-505 Rebordosa

☎ (+351) 255 788 952
turismoindustrial@cm-paredes.pt
www.cm-paredes.pt



OPORTO AND NORTH

April 12 to 19, Ponte de Lima

TOY HUNT

An activity that stimulates the spirit of adventure by challenging participants, through clues and games, to explore and discover the museum space in a kind of treasure hunt. In a playful and informal way, the game involves solving riddles.

🕒 10:30 AM to 12:00 PM | 2:00 PM to 5:00 PM

€ € 1.00 | Minimum 10 people
€ 6.00 | Families (2 adults and children under 18)
Booking required

♿ Activity partially accessible to people with specific needs
No parking reserved for people with reduced mobility

📍 Museu do Brinquedo Português
Casa do Arnado
Largo da Alegria
4990-154 Arcozelo - Ponte de Lima

☎ (+351) 250 240 210
mbp.geral@museuspontedelima.com
www.museuspontedelima.com
FB @ museudobrinquedoportugues
FB @ municipiopontedelima



OPORTO AND NORTH

April 5 to 17, Oporto

ALFÂNDEGA AND MIRAGAIA: FROM VIRTUDES TO THE BEACH

This exploratory route begins in Virtudes, providing a panoramic view over Alfândega and the Douro. The walk takes participants down streets, past fountains, gardens, alleys, and the traditional, historic buildings of Miragaia. A stop in the Jardim das Virtudes invites the tour group to listen to and explore the natural and man-made landscape, with the Customs House serving as a constant point of reference. At the bottom of the hill, the old Miragaia beach reveals the urban transformations necessary for the construction of the Porto Customs House.

🕒 2:30 PM to 4:30 PM

€ € 3.00 | Minimum of 10 people
Activity not covered by personal accident insurance
Booking required

♿ Activity partially accessible to people with specific needs
Parking reserved for people with reduced mobility

📍 Museu dos Transportes e Comunicações - Alfândega do Porto
Edifício da Alfândega - Rua Nova da Alfândega
4050-429 Porto

📞 (+351) 223 403 000
museu@amtc.pt
www.amtc.pt



OPORTO AND NORTH

April 5, Oporto

ELECTRIC SYSTEMS

The workshop provides the opportunity to explore how a tram works through motors, gears, tracks, and electric systems. The activity includes a tram ride and is especially designed for families, providing an interactive and fun experience for all.

🕒 10:30 AM to 12:00 PM

€ € 13.00 | 2 people
€ 8.00 | Additional person
Booking required

♿ Activity partially accessible to people with specific needs
Parking reserved for people with reduced mobility

📍 Museu do Carro Elétrico
Alameda de Basílio Teles, 51
4050-127 Porto

☎ (+351) 226 158 185
servicoeducativo.mce@stcp.pt
www.museudocarroelectrico.pt



Oporto AND NORTH

April 5 and 12, Oporto

IN SEARCH OF LOST TREASURE! NIGHT VISIT TO PORTO'S NEW CUSTOMS HOUSE

After sunset, the Customs House comes to life under the glow of lantern light. Captain Nortada's treasure is cleverly hidden in the establishment, which has been named a National Monument. What are the rails for? Where is the 'Giraffe'? Who was Zé do Saco? What other secrets does this building - a unique witness to Porto's Industrial Revolution - hold? This tour is a true test of courage, even for the most fearless participants.

🕒 9:00 PM to 11:00 PM

€ € 3.00
Booking required

♿ Activity partially accessible to people with specific needs
Parking reserved for people with reduced mobility

📍 Museu dos Transportes e Comunicações - Alfândega do Porto
Edifício da Alfândega - Rua Nova da Alfândega
4050-429 Porto

☎ (+351) 223 403 000
museu@amtc.pt
www.amtc.pt



Oporto AND NORTH

April 7 to 11, Oporto

HANDS AT PLAY AND EYES ON SCIENCE

The Porto Higher Institute of Engineering Museum invites visitors to carry out simple science experiments using common, easily accessible materials. It offers a fun and enriching experience where science is explored in an engaging way, stimulating curiosity, creativity, and critical thinking in children. Building a darkroom or small helicopter challenges participants to explore the world of science in an interactive way.

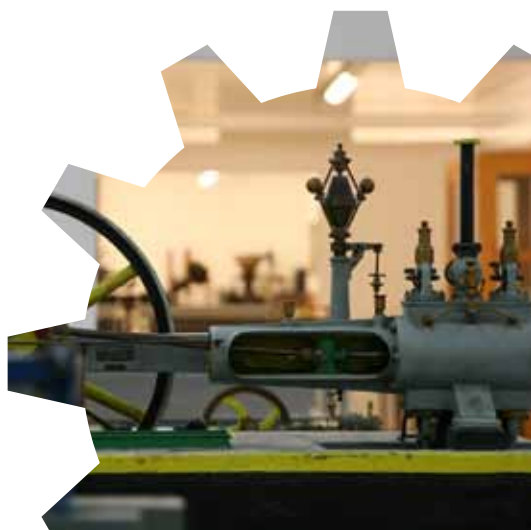
🕒 2:00 PM to 5:00 PM

€ Free
Booking required

♿ Activity not accessible to people with specific needs
No parking reserved for people with reduced mobility

📍 Museu do Instituto Superior de Engenharia do Porto
Rua Dr. António Bernardino de Almeida, 431
4249-015 Porto

☎ (+351) 228 340 508
museu@isep.ipp.pt
www2.isep.ipp.pt/museu/



Oporto AND NORTH

April 12, Oporto

3-VOICES TOUR

During this visit, the museum doors open to warmly welcome both Portuguese and international tourists, together. Three voices, in Portuguese, English, and French, accompany the route, encouraging visitors to interact and share experiences with each other.

🕒 10:00 AM to 11:30 AM

€ € 8.00 | Adults
€ 4.00 | Seniors, children, and students
Booking required

♿ Activity partially accessible to people with specific needs
Not parking reserved for people with reduced mobility

📍 Museu do Carro Elétrico
Alameda de Basílio Teles, 51
4050-127 Porto

☎ (+351) 226 158 185
servicoeducativo.mce@stcp.pt
www.museudocarroelectrico.pt



Oporto AND NORTH

April 5 to 19, São João da Madeira

GUIDED TOUR WITH “PLAYING WITH FELT” WORKSHOP

This tour explores the history of the hat industry and its social, economic, and cultural impact on the local community and wider country. On the tour, visitors explore the technological development of hat-making, from its artisanal beginnings to the present day, and learn about the raw materials used, such as wool felt, rabbit, and beaver fur. In the workshop, they will then play with these materials to craft a unique hat. This activity is designed for school groups.

🕒 10:30 AM to 12:00 PM | 2:30 PM to 4:00 PM

€ Free
Booking required

♿ Activity accessible to people with specific needs
Parking reserved for people with reduced mobility

📍 Museu da Chapelaria
Rua Oliveira Júnior, 501
3700-204 São João da Madeira

☎ (+351) 256 200 204
turismoindustrial@cm-sjm.pt
<https://turismoindustrialsjm.pt/>



OPORTO AND NORTH

April 5 to 19, São João da Madeira

GUIDED TOUR WITH “FROM RAW MATERIAL TO FELT” WORKSHOP

The history of the hat industry in Portugal, from the 19th century onwards, highlights the technological progress that made Portuguese hats internationally renowned. Visitors engage in a sensory experience at the Hat Museum, coming into contact with materials such as wool felt, rabbit and beaver fur. They then create a felt accessory, resulting in a one-of-a-kind hat or piece of jewellery in the workshop. This activity is designed for adults and families.

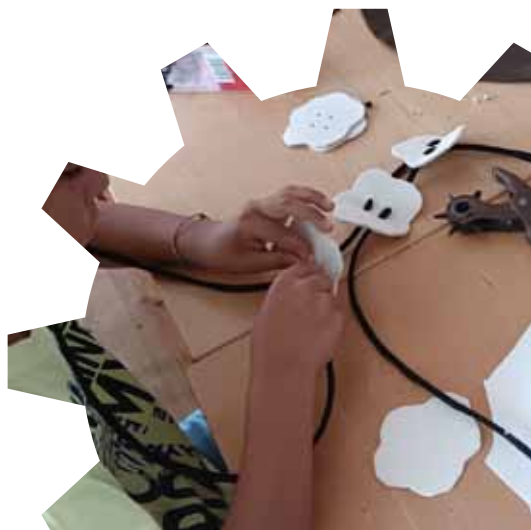
🕒 10:30 AM to 12:00 PM | 2:30 PM to 4:00 PM

€ Free
Booking required

♿ Activity accessible to people with specific needs
Parking reserved for people with reduced mobility

📍 Museu da Chapelaria
Rua Oliveira Júnior, 501
3700-204 São João da Madeira

☎ (+351) 256 200 204
turismoindustrial@cm-sjm.pt
<https://turismoindustrialsjm.pt/>



OPORTO AND NORTH

April 5, São João da Madeira

BOOK LAUNCH, OLIVA: THE UNTOLD STORY (1925-2010)

Launch of book *Oliva: The Untold Story (1925-2010)*, research by ERT Têxtil Portugal SA, carried out by administrator João Brandão and historian Catarina Moreira. This publication aims to contribute to the history of this emblematic company from São João, which celebrates its 100-year anniversary in 2025. Celebrations will also include a Meet-up of Former Oliva Employees, who will come together to celebrate the memory and history of the company.

🕒 3:00 PM

€ Free

♿ Activity partially accessible to people with specific needs
Parking reserved for people with reduced mobility

📍 Torre da Oliva
R. António José de Oliveira Júnior, 591
3700-204 São João da Madeira

☎ (+351) 256 200 204
turismoindustrial@cm-sjm.pt
<https://turismoindustrialsjm.pt/>



OPORTO AND NORTH

April 5, 9 and 12, São João da Madeira

THEMED VISIT: “THE WORLD’S MOST FAMOUS SHOE”

Based on the traditional tale of Cinderella, and with the help of a guide dressed in costume, participants will explore the fascinating process of shoemaking and discover some of the most unique and extraordinary shoes in the history of humanity. For the first time, on the 5th and 12th of April, the Shoe Museum presents families with “The most famous shoe in the world”. On the 9th of April, they will open their doors to welcome preschool groups and guide them through the wonderful process of shoe production.

🕒 10:30 AM to 11:30 AM

€ Free
Booking required

♿ Activity accessible to people with specific needs
Parking reserved for people with reduced mobility

📍 Museu do Calçado
R. António José de Oliveira Júnior, 591
3700-204 São João da Madeira

☎ (+351) 256 200 204
turismoindustrial@cm-sjm.pt
<https://turismoindustrialsjm.pt/>



Oporto AND NORTH

April 6, 8, 10, 13, 15 and 17, São João da Madeira

THEMATIC AND SENSORY VISIT “SHOEMAKER’S HANDS”

“Shoemaker’s Hands” is a visit that transports participants into the imaginary world of a shoemaker’s workshop. Benches, shoes, tools, and raw materials will guide participants’ imaginations. Embark on this adventure of discovery of the stories of this profession.

🕒 10:30 AM to 11:30 AM

€ Free
Booking required

♿ Activity accessible to people with specific needs
Parking reserved for people with reduced mobility

📍 Museu do Calçado
R. António José de Oliveira Júnior, 591
3700-204 São João da Madeira

☎ (+351) 256 200 204
turismoindustrial@cm-sjm.pt
<https://turismoindustrialsjm.pt/>



OPORTO AND NORTH

April 7, São João da Madeira

DISCOVERING 3D PRINTING IN THE FASHION SECTOR

3D printing has made its debut in the fashion industry, providing an innovative way to customise trainers and shoes. A practical, interactive activity that explores the creative possibilities of technology, presenting the manufacturing process, from design to the production of unique accessories. A creative, technological experience designed for secondary school students over 14 years old.

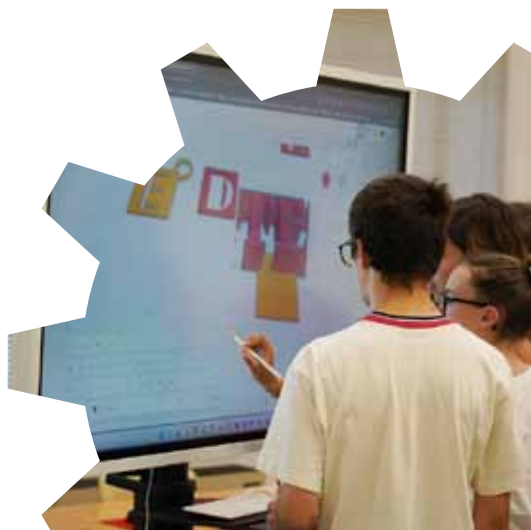
🕒 9:30 AM to 12:30 PM | 2:00 PM to 5:00 PM

€ Free
Booking required

♿ Activity accessible to people with specific needs
Parking reserved for people with reduced mobility

📍 Centro Tecnológico do Calçado de Portugal
Rua de Fundões- Devesa Velha
3700-121 São João da Madeira

☎ (+351) 256 200 204
turismoindustrial@cm-sjm.pt
<https://turismoindustrialsjm.pt/>



Oporto and North

April 8 and 15, São João da Madeira

GUIDED TOUR OF THE OLIVA TOWER WITH CREATIVE LABORATORY “RECYCLED ARCHITECTURE: THE OLIVA TOWER”

In this activity, and to celebrate Oliva's 100-year anniversary, visitors will get the chance to build a replica of the iconic Oliva Tower by reusing materials. The Laboratory provides an excellent opportunity to both explore creativity and promote sustainability.

🕒 3:00 PM to 4:30 PM

€ Free
Booking required

♿ Activity accessible to people with specific needs
Parking reserved for people with reduced mobility

📍 Torre da Oliva
R. António José de Oliveira Júnior, 591
3700-204 São João da Madeira

☎ (+351) 256 200 204
turismoindustrial@cm-sjm.pt
<https://turismoindustrialsjm.pt/>



OPORTO AND NORTH

April 9 and 16, São João da Madeira

LEATHERWORKING WORKSHOP: CRAFT YOUR OWN ACCESSORY

In this creative experience, visitors dive into the world of leather goods and learn how to craft a leather accessory using simple tools and traditional techniques. Ideal for beginners and craft enthusiasts, this experience provides participants with the chance to work directly with the highest quality materials. Guided by a speto assembling and putting the finishing touches on their accessory. By the end of the workshop, each participant will have produced a unique, functional, handmade piece.

🕒 2:00 PM to 5:00 PM

€ Free
Booking required

♿ Activity accessible to people with specific needs
Parking reserved for people with reduced mobility

📍 Centro de Formação Profissional da Indústria do Calçado
R. Visconde de São João da Madeira, 990
3700-265 São João da Madeira

☎ (+351) 256 200 204
turismoindustrial@cm-sjm.pt
<https://turismoindustrialsjm.pt/>



OPORTO AND NORTH

April 12, São João da Madeira

“SCENTED IMPRESSIONS” CREATIVE LABORATORY

In this creative laboratory, visitors will learn more about screen printing and get the chance to put an innovative touch on their creations by means of exclusive fragrances. In addition to exploring the entire manual printing process, participants will be able to personalise pieces with unique aromas provided by Bulhosas, transforming each piece into a multisensory experience.

🕒 10:00 AM to 11:30 AM

€ Free
Booking required

♿ Activity not accessible to people with specific needs
Parking reserved for people with reduced mobility

📍 Bulhosas
Av. 1º de Maio – Zona Industrial das Travessas
3701-909 São João da Madeira

☎ (+351) 256 200 204
turismoindustrial@cm-sjm.pt
<https://turismoindustrialsjm.pt/>



OPORTO AND NORTH

April 12, São João da Madeira

VISIT TO THE OLIVA TOWER WITH CREATIVE LABORATORY “GRAPHIC OLIVA”

On a creative journey following a fascinating visit to the historic Oliva Tower, visitors are challenged to create their own advertising poster for this ancient company, taking inspiration from its rich heritage. In this space, participants are encouraged to allow their imagination to run wild as they recreate advertising from Oliva's golden age or bring it up to date by adding a modern, innovative touch. It's time to bring ideas to life and (re) imagine the greatness of Oliva through creativity!

🕒 3:00 PM to 4:30 PM

€ Free
Booking required

♿ Activity accessible to people with specific needs
Parking reserved for people with reduced mobility

📍 Torre da Oliva
R. António José de Oliveira Júnior, 591
3700-204 São João da Madeira

☎ (+351) 256 200 204
turismoindustrial@cm-sjm.pt
<https://turismoindustrialsjm.pt/>



OPORTO AND NORTH

April 14, São João da Madeira

“ROUTE OF KNOWLEDGE” ENCHANTED FACTORY

Anticipating the need for professionals, the Portuguese footwear industry, through APICCAPS and the Footwear Technology Centre of Portugal, is developing the “Knowledge Roadmap.” This interactive experience features open dialogue, text creation, digital quizzes, and interactive games. It also offers the opportunity to explore the footwear factory of the future through virtual reality.

It is aimed at middle and high school students, who can be accompanied by family members.

🕒 10:00 AM

€ Free
Booking required

♿ Activity partially accessible to people with specific needs
Parking reserved for people with reduced mobility

📍 Torre da Oliva
R. António José de Oliveira Júnior, 591
3700-204 São João da Madeira

☎ (+351) 256 200 204
turismoindustrial@cm-sjm.pt
<https://turismoindustrialsjm.pt/>



OPORTO AND NORTH

April 15, São João da Madeira

NIGHT VISIT TO FEPSA

Participants will discover the secrets behind the creation of the most sophisticated hats, closely following each stage of the process, from choosing the felt to the final finishes. Under the starry sky on a special night, participants will get the unique chance to see how the raw material is transformed into iconic, stylish, elegant pieces, and to get a close look at the charm and timeless beauty of felt hats!

🕒 9:00 PM to 10:30 PM

€ Free
Booking required

♿ Activity partially accessible to people with specific needs
Parking reserved for people with reduced mobility

📍 Torre da Oliva
R. António José de Oliveira Júnior, 591
3700-204 São João da Madeira

☎ (+351) 256 200 204
turismoindustrial@cm-sjm.pt
<https://turismoindustrialsjm.pt/>



OPORTO AND NORTH

April 5 to 19, Santa Maria da Feira

CORK: FROM THE DEHESA TO THE WORLD

Well-known and valued for its countless uses, cork is a fascinating, versatile, exceptional raw material that produces practically “no waste, and every part is transformed”. Visitors can discover the unique characteristics of this resource and its multiple uses in the “Cork Museum Hub”, which reflects the historical connection of the material to the region and combines industrial archaeology with art in natural cork and its derivatives, highlighting the fascinating route “From the Dehesa to the World”.

🕒 10:00 AM to 12:00 PM | 2:30 PM to 4:30 PM

€ € 4.00
Booking required

♿ Activity partially accessible to people with specific needs
Parking reserved for people with reduced mobility

📍 Núcleo Museológico da Cortiça
Largo da Igreja, 90
Parque de Santa Maria de Lamas
4535-412 Santa Maria de Lamas

☎ (+351) 227 447 468
geral@museudelamas.pt
www.museudelamas.pt



Oporto and North

April 5 to 19, Santa Maria da Feira

THE MYSTERY OF THE DISAPPEARANCE OF THE CORK OAK'S CLOTHES

A recreational and educational activity, it highlights the exploration of the cork oak forest, the cork oak's natural habitat, and its biodiversity. This initiative is part of the broad, diverse programme run by the Santa Maria de Lamas Museum's Educational Service, which also promotes other enriching experiences.

🕒 10:00 AM to 12:00 PM | 2:30 PM to 4:30 PM

€ € 4.00
Booking required

♿ Activity partially accessible to people with specific needs
Parking reserved for people with reduced mobility

📍 Museu de Santa Maria de Lamas
Largo da Igreja, 90
Parque de Santa Maria de Lamas
4535-412 Santa Maria de Lamas

☎ (+351) 227 447 468
geral@museudelamas.pt
www.museudelamas.pt



Oporto and North

April 8 to 17, Santa Maria da Feira

AN ADVENTURE IN CORK

Where does cork come from? How is it transformed into cork stoppers? Is it only used to make stoppers? These questions will be answered in this family-friendly activity, where visitors will learn about the origins of this important raw material, its uses, and how to repurpose it by creating useful and personalized objects.

🕒 9:30 AM to 4:45 PM – Monday to Friday
3:00 PM – April 13 (for families)

€ Free
Booking required (48 hours prior)

♿ Activity accessible to people with specific needs
Parking reserved for people with reduced mobility

📍 Museu Convento dos Loios
Praça Dr. Guilherme Alves Moreira
4520-174 Santa Maria da Feira

☎ (+351) 256 331 070
museuconventodosloios@cm-feira.pt
<https://museuconventodosloios.cm-feira.pt/>



Oporto AND NORTH

April 8 and 15, Santa Maria da Feira

DO YOU KNOW YOUR WAY AROUND THE PAPER MUSEUM WITH YOUR EYES CLOSED?

The Terras de Santa Maria Paper Museum invites participants in to playfully explore as part of a unique experience that challenges every sense - except vision! Blindfolded and using audio-description equipment, participants will be able to touch objects and machines, work replicas of paper production machines, feel the different stages of the pulp, and discover the distinct textures and sounds of sheets of paper.

🕒 10:00 AM to 11:30 AM

€ Free
Booking required

♿ Activity partially accessible to people with specific needs
Parking reserved for people with reduced mobility

📍 Museu do Papel Terras de Santa Maria
Rua de Rio Maior, 338
4535-301 Paços de Brandão

☎ (+351) 256 370 850
(+351) 934 569 392
museudopapel@cm-feira.pt
<https://museudopapel.cm-feira.pt>



Oporto and North

April 10 and 17, Santa Maria da Feira

PAPERMAKERS FOR A DAY

The Terras de Santa Maria Paper Museum challenges visitors to become papermakers for a day. In this practical workshop, participants will cut the raw material, make pulp, produce sheets of paper manually, and leave them out to dry. Notably, white or blue cotton rags, such as (100% cotton) t-shirts and jeans, are used as the raw material for the activity. A unique experience, transforming fabrics into handmade paper.

🕒 10:00 AM to 11:30 AM

€ Free
Booking required

♿ Activity partially accessible to people with specific needs
Parking reserved for people with reduced mobility

📍 Museu do Papel Terras de Santa Maria
Rua de Rio Maior, 338
4535-301 Paços de Brandão

☎ (+351) 256 370 850
(+351) 934 569 392
museudopapel@cm-feira.pt
<https://museudopapel.cm-feira.pt>



OPORTO AND NORTH

April 7, 9 and 15, Santo Tirso

TOUR OF THE SINGEVERGA LIQUEUR PRODUCTION PROCESS

Discover the mysterious production process of Singeverga Liqueur. A complex recipe is brought to life through entirely artisanal manufacturing methods. In rudimentary facilities that produce a high-quality product. The only one in Portugal that has gained a monastic seal. Presenting with a delicate taste, it has a very fine aroma. Wise monks craft the famous liqueur, distilling spices and aromatic plants themselves. The tour includes entry to the Church, Cloister, and Chapter Room of the Singeverga Monastery. The visit rounds off with a Singeverga Liqueur tasting.

✓ April 7 and 15: 11:00 AM to 12:00 PM
April 9: 3:00 PM to 4:00 PM

€ Free
Booking required

♿ Activity partially accessible to people with specific needs
Parking reserved for people with reduced mobility

📍 Mosteiro de São Bento de Singeverga
Rua do Mosteiro de Singeverga, 200
4795-309 Santo Tirso

☎ (+351) 252 830 411
turismo@cm-stirso.pt
www.cm-stirso.pt



Oporto AND NORTH

April 8 to 10 and 15 to 17, Santo Tirso

CRAFT WORKSHOP

The workshop invites participants to explore the 'Patchworking' technique. Using locally produced fabrics, tones and patterns will be creatively and harmoniously combined. This technique, appealing to both beginners and professionals, offers an enriching and memorable experience.

🕒 8:00 PM to 10:00 PM

€ Free
Booking required

♿ Activity partially accessible to people with specific needs
Parking reserved for people with reduced mobility

📍 Centro Interpretativo da Fábrica de Santo Thyrsó
Rua Dr. Oliveira Salazar, s/n
4780-453 Santo Tirso

☎ (+351) 252 830 411
turismo@cm-stirso.pt
www.cm-stirso.pt



Oporto AND NORTH

April 10, Santo Tirso

COMMENTED LIQUOR TASTING

The liqueur is a unique beverage, and understanding its complexity is a challenge. The tasting will unveil unique flavors, showcasing the art of craftsmanship and offering the opportunity to compare exquisite profiles. This experience serves as a tribute to these esteemed artisans.

🕒 5:00 PM to 6:30 PM

€ Free
Booking required

♿ Activity partially accessible to people with specific needs
Parking reserved for people with reduced mobility

📍 Mosteiro de São Bento de Singeverga
Rua do Mosteiro de Singeverga, 200
4795-309 Santo Tirso

☎ (+351) 252 830 411
turismo@cm-stirso.pt
www.cm-stirso.pt



Oporto AND NORTH

April 13, Santo Tirso

YARN & FABRIC MARKET

Located in the heart of the Ave Valley, a region rich in textile industry and home to an impressive material and immaterial heritage, Santo Tirso stands out for its strong tradition of urban markets. The stalls of the Yarn & Fabric Market provide unique patterns and a wide range of yarns ideal for a wide range of creative projects. The event takes place in the picturesque riverside area of Rio Ave, next to the Train Station.

🕒 11:00 AM to 6:00 PM

€ Free

♿ Activity accessible to people with specific needs
Parking reserved for people with reduced mobility

📍 Mercado de Fios & Tecidos
Avenida da Fábrica de Santo Thyrsó, s/n
4780-257 Santo Tirso

☎ (+351) 252 830 411
turismo@cm-stirso.pt
www.cm-stirso.pt



Oporto AND NORTH

April 5 to 12, Viana do Castelo

WATERMILL ROUTE

This educational activity allows participants to experience the industrial processes that take place in the mills, showcasing the traditional techniques of milling and cereal processing. Through practical demonstrations, participants will learn how watermills work, the historical significance of watermills in food production, and the impact of this tradition on the local economy over the centuries.

🕒 10:00 AM to 12:00 PM | 2:00 PM to 4:00 PM

€ Free
Booking required

♿ Activity accessible to people with specific needs
Parking reserved for people with reduced mobility

📍 Azenha da Almerinda
Rua da Azenha
4905-202 Alvarães

📞 viladealvaraes@sapo.pt
www.alvaraes.pt



Oporto AND NORTH

April 5 to 12, Viana do Castelo

CERAMICS ROUTE

An educational activity that explores the industrial processes of ancient kilns, providing participants with knowledge about brick and ceramic production techniques. Throughout the experience, participants learn about manufacturing methods, the tools used, and the historical impact of these operations.

🕒 10:00 AM to 12:00 PM | 2:00 PM to 4:00 PM

€ Free
Booking required

♿ Activity accessible to people with specific needs
Parking reserved for people with reduced mobility

📍 Fornos Telheiros de Alvarães
Rua da Costeira
4905-204 Alvarães

📞 viladealvaraes@sapo.pt
www.alvaraes.pt



OPORTO AND NORTH

April 5 to 19, Viana do Castelo

NAVIGATING THROUGH THE GIL EANNES MUSEUM SHIP SELF-GUIDED TOUR

As they embark on a self-guided tour of the museum ship, visitors find themselves in the midst of a historical, cultural, and nautical experience, “sailing” through areas such as: the command bridge, wheelhouse, kitchen, bakery, engine room, infirmaries, doctor’s office, treatment room, operating room, various cabins, and chapel among others, as well as learning about the ship’s construction, which dates back to 1955. Visitors can also purchase audio guides at the ticket office, which are available in 5 languages: Portuguese, English, Spanish, French, and German.

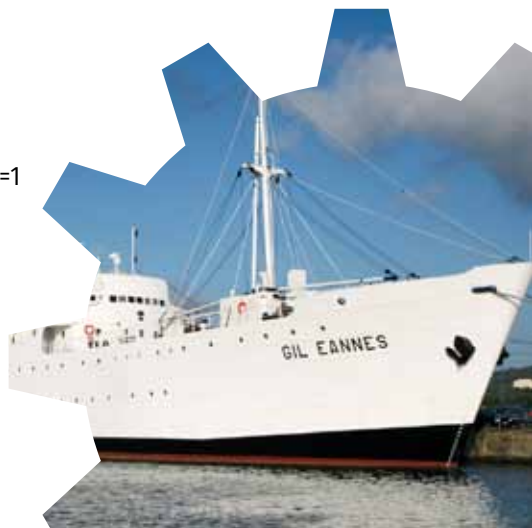
🕒 9:30 AM to 6:00 PM

€ € 5.00 | Individual ticket
€ 12.00 Family ticket (includes 2 adults and up to 4 children aged 7 to 16)
Free for children up to 6 years old
Discounts: special prices for groups

♿ Activity not accessible to people with specific needs
Parking reserved for people with reduced mobility

📍 Navio Museu Gil Eannes
Doca Comercial
4900-321 Viana do Castelo

☎ (+351) 966 442 644
visitas@fundacaogileannes.pt
www.fundacaogileannes.pt/engine.php?cat=1



OPORTO AND NORTH

April 5 to 19, Viana do Castelo

GUIDED VISIT TO THE GIL EANNES MUSEUM SHIP

Held for groups of a minimum of 10 and a maximum of 25 participants, the guided tour begins with a brief historical introduction of the importance of the ship's construction, its mission in supporting the cod fishing fleet, it being rescued from the scrapyard, and its current role as a museum. With an average duration of an hour and a half accompanied by a guide, visitors can "navigate" and learn about the functionality of each space, as well as visit the exhibitions on board dedicated to navigation, the sea, and culture.

🕒 9:30 AM to 6:00 PM

€ € 6.50 | Individual ticket
€ 13.00 | Family ticket (includes 2 adults and up to 4 children aged 7 to 16)
Free for children up to 6 years old
Discounts: special prices for school groups

♿ Activity not accessible to people with specific needs
Parking reserved for people with reduced mobility

📍 Navio Museu Gil Eannes
Doca Comercial
4900-321 Viana do Castelo

☎ (+351) 966 442 644
visitas@fundacaogileannes.pt
www.fundacaogileannes.pt/engine.php?cat=1



OPORTO AND NORTH

April 5, Viana do Castelo

GUIDED TOUR OF THE INÁCIO MILL

Visit the old one-waterwheel mill, which began operating in 1837 and was recently restored. The space is fully equipped and ready to operate, respecting traditional techniques for grinding and processing cereals.

🕒 2:00 PM to 5:00 PM

€ Free
Booking required

♿ Activity accessible to people with specific needs
Parking reserved for people with reduced mobility

📍 Moinho do Inácio
Rua das Boucinhas
4905-667 Vila de Punhe

☎ (+351) 258 772 855 | 937 889 058
junta.vilapunhe@gmail.com



OPORTO AND NORTH

April 5, Viana do Castelo

GUIDED TOUR OF THE MUSEUM OF HONEY AND KAOLIN

Visitors can explore the cultural heritage of the left bank of the Lima River and discover the vast natural and cultural treasures of Viana do Castelo within this exhibition space, divided into two sections: the honey section, where various tools used by beekeepers can be observed, different hive products can be explored, and honey tasting is offered; and the kaolin section, showcasing the history of its extraction and the applications of this special clay.

There is also the possibility of visiting the apiary in your own vehicle, followed by a tasting of traditional cornbread with honey.

🕒 2:00 PM to 5:00 PM

€ Free
Booking required

♿ Activity accessible to people with specific needs
Parking reserved for people with reduced mobility

📍 Moinho do Inácio
Rua das Boucinhas
4905-667 Vila de Punhe

☎ (+351) 258 772 855 | 937 889 058
junta.vilapunhe@gmail.com



OPORTO AND NORTH

April 8 to 19, Viana do Castelo

SELF-GUIDED PAPER CHASE OF THE URBAN ECOLOGICAL PARK

This activity invites participants to explore the connection between the Tide Mill and its natural surrounding area – the Urban Ecological Park. During the tour, participants will learn how the mill shaped the landscape over time, influencing the development of the local ecosystem. The activity provides insight into how the interaction between man and nature has resulted in a sustainable balance being achieved in which the mill and its natural surroundings are able to coexist harmoniously, highlighting the importance of environmental preservation.

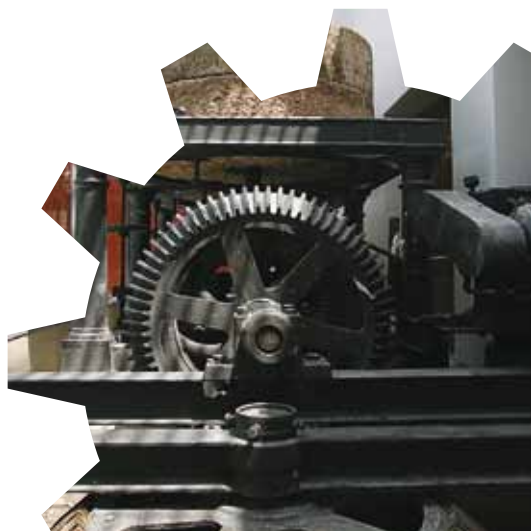
🕒 8:00 AM to 8:00 PM

€ Free
Booking required

♿ Activity partially accessible to people with specific needs
Parking reserved for people with reduced mobility

📍 Moinho de Maré
Rua da Argaçosa – Meadela
4900-394 - Viana do Castelo

☎ (+351) 258 809 362
cmia@cm-viana-castelo.pt
<https://ambiente.cm-viana-castelo.pt/>



OPORTO AND NORTH

April 8 to 19, Viana do Castelo

SELF-GUIDED VISIT TO THE TIDE MILL

The Tide Mill, located at the Environmental Monitoring and Interpretation Centre and known locally as Azenhas de D. Prior, is a unique example of how tidal energy was used for milling activities, and it is believed to have been operational until the 1930s. A visit to the Tide Mill gives visitors insights into its local history and significance, highlighting the hydraulic and mechanical potential of the tides, which provide an inexhaustible and sustainable source of energy, as well as how the mill operates.

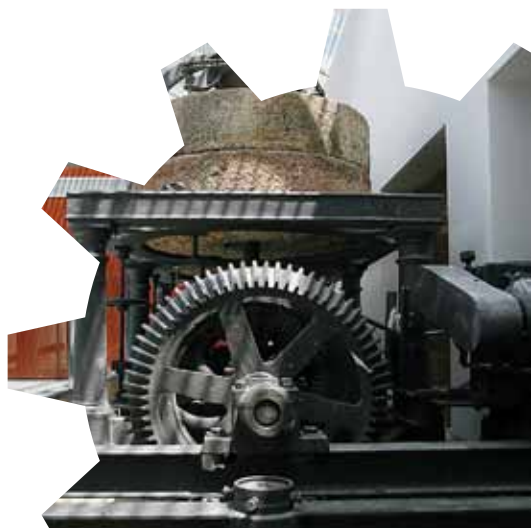
🕒 10:00 AM to 1:00 PM | 2:00 PM to 6:00 PM

€ Free
Booking required

♿ Activity partially accessible to people with specific needs
Parking reserved for people with reduced mobility

📍 Moinho de Maré
Rua da Argaçosa – Meadela
4900-394 - Viana do Castelo

☎ (+351) 258 809 362
cmia@cm-viana-castelo.pt
<https://ambiente.cm-viana-castelo.pt/>



OPORTO AND NORTH

April 5 to 19, Vila Nova de Famalicão

VISIT TO THE NATIONAL RAILWAY MUSEUM LOUSADO HUB

In this museum, a visit to the permanent exhibition is truly a journey through time. It is composed of rolling stock from eight railway companies that operated on narrow-gauge lines in Portugal, as well as various objects and equipment of different types. The workshop, which is still operational, is of particular note, providing a unique experience in a real-life setting.

🕒 10:00 AM to 5:30 PM - tuesday to friday
2:30 PM to 5:30 PM - saturday and sunday

€ Free
Booking required

♿ Activity partially accessible to people with specific needs
Parking reserved for people with reduced mobility

📍 Museu Nacional Ferroviário - Núcleo de Lousado
Largo da Estação de Lousado, 2
4760-623 Lousado

☎ (+351) 249 130 382
museu@fmnf.pt
www.fmnf.pt/pt/lousado



Oporto and North

April 5 to 19, Vila Nova de Famalicão

GUIDED TOUR OF THE TÊXTIL NORTENHA COMPANY

The company Têxtil Nortenha gives visitors access to collections produced by the most glamorous international brands. Driven by a strong entrepreneurial spirit, the company produces a diverse range of circular knit garments. During this visit, participants can view some of these pieces on display in the company's showroom. Visitors also get the chance to watch various production processes as they learn about the vision and values of a company notable for its quality and focus on sustainability.

🕒 9:00 AM

€ € 15.00
Booking required

♿ Activity accessible to people with specific needs
Parking reserved for people with reduced mobility

📍 Empresa Têxtil Nortenha
Rua de Prazins, 60
4770-780 Avidos

📧 turismoindustrial@famalicao.pt
www.textilnortenha.pt



OPORTO AND NORTH

April 5 to 19, Vila Nova de Famalicão

VISIT TO THE TEXTILE INDUSTRY MUSEUM

In this visit to the only museum dedicated to this activity in the North of the country, visitors have the opportunity to explore the museum collection, which consists of a set of machines, instruments, and objects representing various eras and different production processes. These items originate from former textile factories in the region, with particular highlights including looms, warping machines, spooling machines, calenders, rollers, ring-spinning machines, winders, dynamometers, and scales.

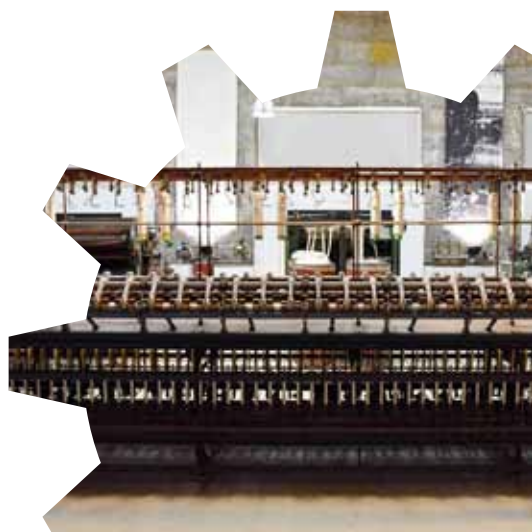
🕒 10:00 AM to 5:30 PM – Tuesday to Friday
2:30 PM to 5:30 PM – Saturday and Sunday

€ Free
Booking required

♿ Activity accessible to people with specific needs
Parking reserved for people with reduced mobility

📍 Museu da Indústria Têxtil
Rua José Casimiro da Silva – Outeiro
4760-355 Calendário

☎ (+351) 252 313 986
geral@museudaindustriatextil.org
www.museudaindustriatextil.org



OPORTO AND NORTH

April 5 to 19, Vila Nova de Famalicão

GUIDED TOUR OF THE AUTOMOBILE MUSEUM

The Vila Nova de Famalicão Automobile Museum is a dream come true for motorsport enthusiasts, helping solidify the city's title as the Capital of Vintage Cars. The origins of this museum stem from the creation of the Vila Nova de Famalicão Antique and Classic Automobile Club, which, over time, ran various initiatives that contributed to the establishment of a museum dedicated to automobiles. These initiatives included historical parades, and two major exhibitions held in 1997 and 2005. Spanning over 3,000m², the museum gives visitors the chance to take a retrospective journey through the evolution of automobile design throughout the 20th century.

🕒 10:00 AM - 12:30 PM | 2:30 PM - 5:30 PM – weekdays

€ € 2.50 | € 7.50 – family ticket | Free for children under 12
Booking required

♿ Activity accessible to people with specific needs
Parking reserved for people with reduced mobility

📍 Museu do Automóvel
Famalicão Central Park, Lote 48 B
4760-673 Ribeirão

☎ (+351) 252 314 045
museudoautomovelfamalicao@gmail.com
FB @ museudoautomovelfamalicao/



Oporto and North

April 5 and 6, Vila Pouca de Aguiar

REINVENTING THE FLAVOURS OF JALLES MINES LUNCHBOXES

Drawing inspiration from the flavours of the Jalles Mine lunchboxes, a local product tasting, including wines from Forno de Jales, is paired with a guided tour of the Jales Mining Interpretation Centre.

This activity requires a minimum of 8 participants.

🕒 11:00 AM

€ € 43.00
Discount for children up to 10 years old
Booking required

♿ Activity partially accessible to people with specific needs
Parking reserved for people with reduced mobility

📍 Centro Interpretativo Mineiro de Jales
CM 1172-1
5450-341 Vreia de Jales

☎ (+351) 259 458 133
cimineirojales@gmail.com
www.cm-vpagueir.pt



Oporto and North

April 18 and 19, Vila Pouca de Aguiar

JALLES ESCAPE ROOM

Shrouded in new mysteries, the underground gallery of the Jales Mining Interpretation Centre gives participants the chance to experience the adrenaline felt by miners who, for 60 years, ventured underground to mine the most precious metal of all – gold. Testing the skills and composure of those daring enough to solve enigmas in an underground environment, this activity challenges participants to escape and reach the surface in under 60 minutes.

🕒 10:30 AM | 12:00 PM | 2:30 PM | 4:00 PM

€ € 17.00 | Group of 4 people
€ 15.00 | Group of 5 people
Booking required

♿ Activity partially accessible to people with specific needs
No parking reserved for people with reduced mobility

📍 Centro Interpretativo Mineiro de Jales
CM 1172-1
5450-341 Vreia de Jales

☎ (+351) 259 458 133
cimineirojales@gmail.com
www.cm-vpaguiar.pt



AZORES

ALENTEJO AND RIBATEJO

ALGARVE

CENTRE OF PORTUGAL

OPORTO AND NORTH

LISBON REGION

LISBON REGION

April 5, Barreiro

ALBURRICA MILLING HERITAGE ROUTE GUIDED VISIT

Starting at the Maré Pequeno Windmill, following an initial contextual explanation, the visit takes participants along walkways that provide scenic views of the tide- and windmills, culminating with a visit to the Alburrica Eastern Windmill. This circuit allows visitors to delve into the history of the mills that make up Barreiro's milling heritage.

🕒 10:00 AM

€ Free
Booking required

♿ Activity partially accessible to people with specific needs
Parking reserved for people with reduced mobility

📍 Moinho de Maré Pequeno-Centro Interpretativo
Largo do Moinho Pequeno, 8
2830-316 Barreiro

☎ (+351) 212 068 287
(+351) 212 068 535
postodeturismo@cm-barreiro.pt
www.cm-barreiro.pt



LISBON REGION

April 12, Barreiro

MEMORY CENTRE

The exhibition on the history of Barreiro traces its journey from the first settlement, exploring the municipality's role in the Age of Discoveries, highlighting the tide- and windmills, the establishment of the railway, the cork industry, and the Companhia União Fabril, all the way up to the Carnation Revolution. It stands as an invitation to get to know the history of Barreiro and its people.

🕒 10:00 AM

€ Free
Booking required

♿ Activity partially accessible to people with specific needs
Parking reserved for people with reduced mobility

📍 Espaço Memória
R. 17, 10
(Arco Ribeirinho Sul - Parque Empresarial)
2830-571 Barreiro

☎ (+351) 212 068 287
(+351) 212 068 535
postodeturismo@cm-barreiro.pt
www.cm-barreiro.pt



LISBON REGION

April 9 and 16, Lisbon

STEAM-POWERED BARBADINHOS

The Water Museum project was born from an old Steam Pumping Station, originally built to lift water

from the Alviela River. The museum, located within the grounds of a former Franciscan convent, pays tribute to the role of water in the history of the supply services industry. The route takes visitors through the garden, the exhibition hall, the machinery hall, and certain restricted areas. The history of steam production and water lifting is presented, along with the human, social, and cultural impact on a community for whom these operations have always played a significant role: the workers of the Lisbon Water Company (CAL).

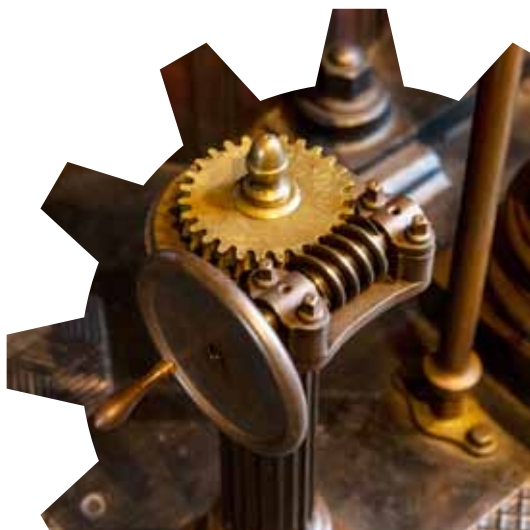
🕒 12:30 PM to 1:00 PM

€ Free
Booking required

♿ Activity accessible to people with specific needs
Parking reserved for people with reduced mobility

📍 Museu da Água
Rua do Alviela
1170-012 Lisboa

☎ (+351) 218 100 215
mda.epal@adp.pt
www.epal.pt/EPAL/menu/museu-da-água



LISBON REGION

April 6 and 12, Montijo

OPEN MILLS

This activity takes place next to the Tide Mill and includes an animation/recreation of the history of the mill and the daily life of its millers.

🕒 11:00 AM to 1:00 PM

€ Free
Booking required

♿ Activity not accessible to people with specific needs
Parking reserved for people with reduced mobility

📍 Moinho de Maré do Cais das Faluas
Frente Ribeirinha
2870-356 Montijo

📞 museu.se@mun-montijo.pt
www.mun-montijo.pt



LISBON REGION

April 5 to 19, Setúbal

VISIT TO THE COCA-COLA EUROPACIFIC PARTNERS FACTORY, PORTUGAL

This visit to the Coca-Cola Factory begins with the historic component, and a small welcome video is displayed. Next is the corporate component, providing an overview of the Coca-Cola System and the sustainability programme “This is Forward.” The tour continues with a visit to the Production Area, offering a glimpse into the filling process for glass, aluminium, and PET packaging. Visitors then get a look into the Syrup Room and the Quality Control Laboratory. The experience ends with relaxation, where visitors can enjoy tasting some beverages while they watch a short video summarising the key information shared during the tour.

🕒 9:30 AM to 11:00 AM | 11:30 AM to 1:00 PM | 2:30 PM to 4:00 PM

€ Free
Booking required

♿ Activity partially accessible to people with specific needs
Parking reserved for people with reduced mobility

📍 R. da Salmoura
2929-509 Azeitão - Portaria Norte

📞 apereira.ext@ccep.com
visitasfabrica@ccep.com
www.cocacolaep.com/pt



LISBON REGION

April 5, Setúbal

“THE CANNING INDUSTRY IN SETÚBAL (1854-1995)” GUIDED VISIT

The fish canning industry in Setúbal was the epitome of local industrialisation between the second half of the 19th century and the first half of the 20th century. The aim of this tour is to explore the old canning factories in Setúbal, whose industrial heritage marks the landscape of the riverside area through the many chimneys that remain. It covers the introduction, heyday and decline of canned sardines, as well as the cultural/political dynamism associated with this universe.

🕒 10:00 AM to 1:00 PM

€ Free

♿ Activity partially accessible to people with specific needs
No parking reserved for people with reduced mobility

📍 Meeting point at Av. Luisa Todi, 3
2900-459 Setúbal

☎ (+351) 265 537880
gabphc@mun-setubal.pt
www.mun-setubal.pt



LISBON REGION

April 12, Setúbal

FACTORY PAPER CHASE

Participants are invited to explore the area of the former factory in Setúbal on a paper chase that will teach them about the history and legacy of the canning industry in the city of Setúbal. Each group forms a team, with the main objective being not just to finish first, but to engage directly with the museum and enjoy an interactive experience centred on the theme. The activity takes place on Floor 0 of the Michel Giacometti Museum of Labour, in the “Canning Industry” exhibition.

🕒 3:00 PM to 4:30 PM

€ Free
Booking required

♿ Activity partially accessible to people with specific needs
Parking reserved for people with reduced mobility

📍 Museu do Trabalho Michel Giacometti
Largo Defensores da República
2910-470 Setúbal

☎ (+351) 917 771 214
servico.educativo.museus@mun-setubal.pt
www.mun-setubal.pt



TECHNICAL SHEET

Content collected from partners
of the Industrial Tourism network,
by the Regional Tourism Entities Alentejo and Ribatejo,
Algarve, Centre of Portugal, Porto and North, Lisbon Region
and Azores Regional Tourism

www.visitazores.com/en
www.visitalentejo.pt/en/
www.visitribatejo.pt/en/
<https://visitalgarve.pt/en/>
www.centerofportugal.com/
www.portoenorte.pt/en/
www.ertlisboa.pt/
www.visitportugal.com/en

Graphic Design
GizDesign.com
dezembro 2024

